

# Anatomy & Physiology

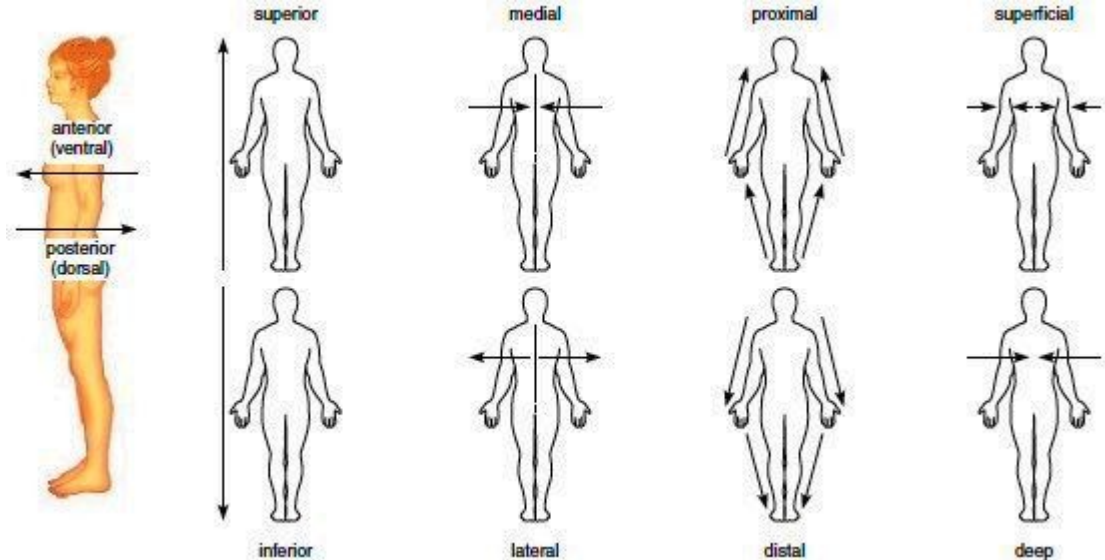
# Language of Anatomy



# **Anatomical Position & Directional Terms**

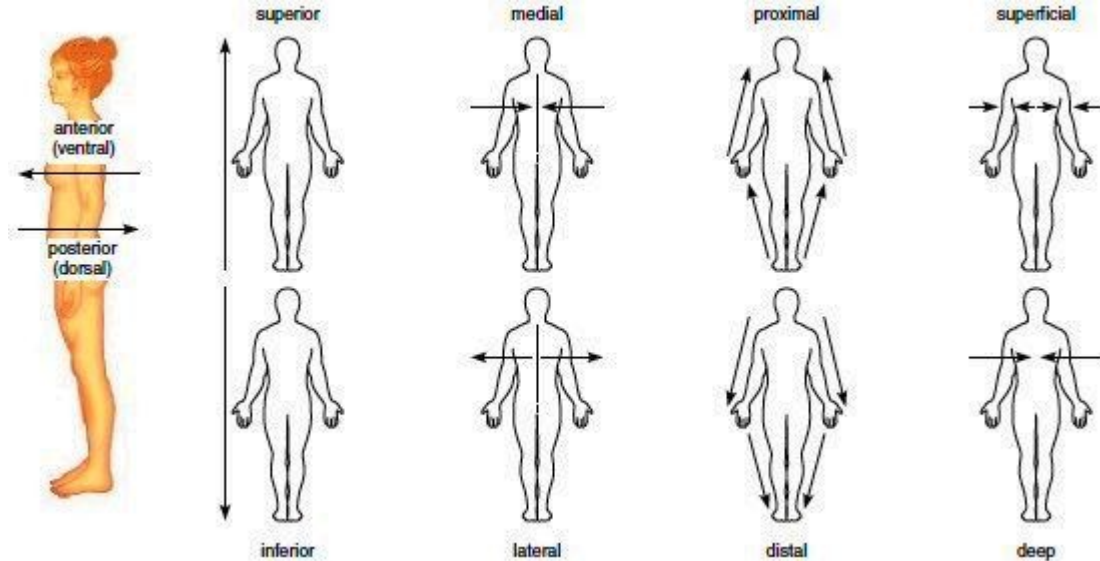
# Distal

Farther from the origin of a body part or point of attachment of a limb to the body part



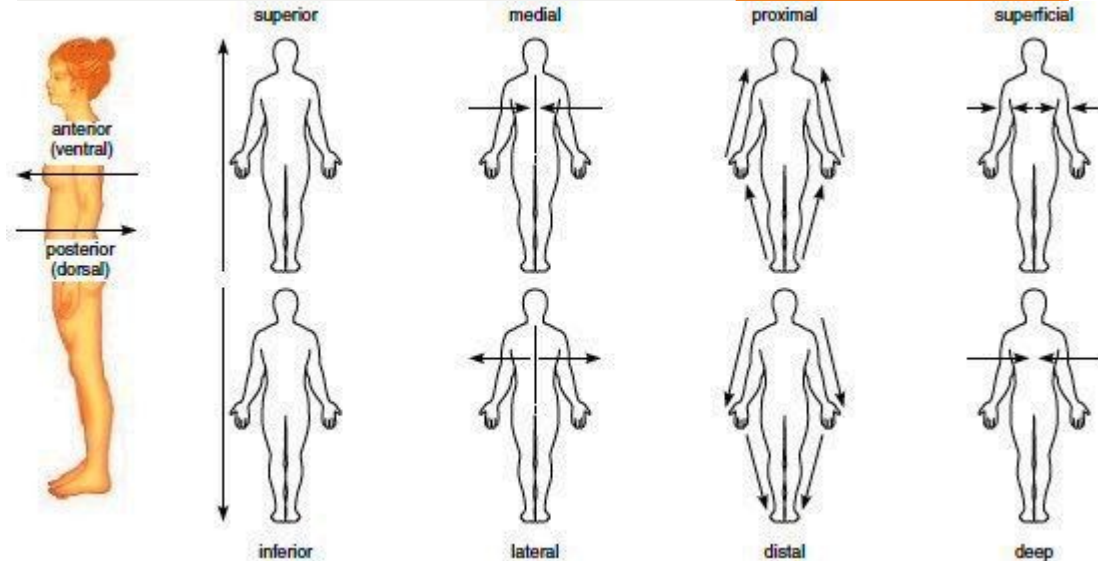
# Deep (Internal)

Away from the body surface; more internal



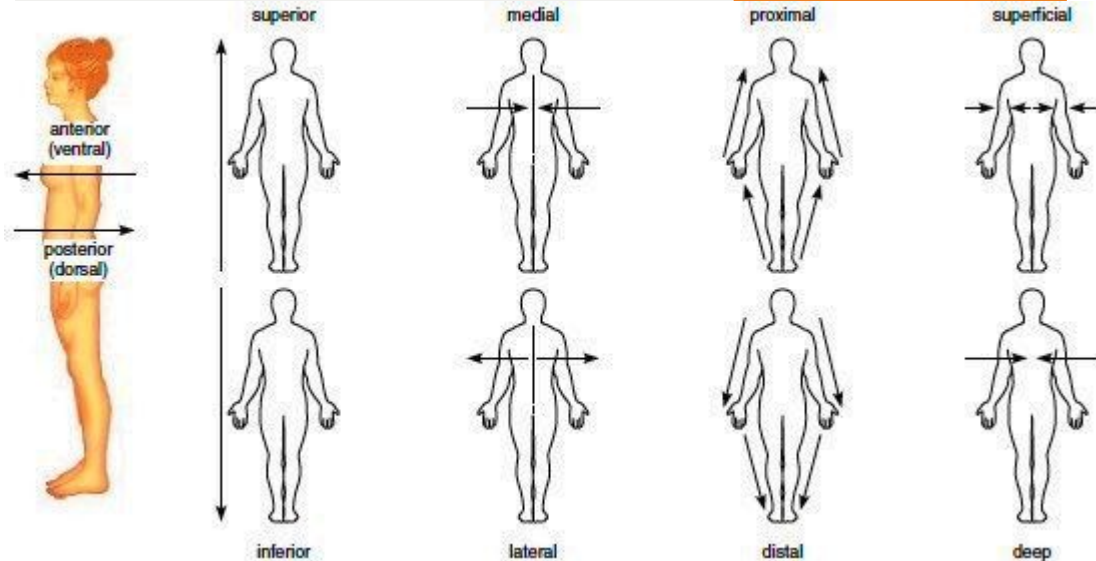
# Anterior (Ventral)

Toward or at the front of the body; in front of



# Inferior (Caudal)

Away from the head end or toward the lower part of a structure or body; below

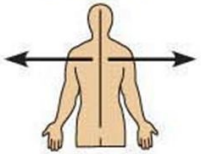
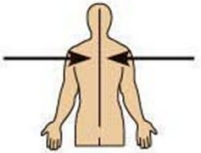


# Intermediate

Between a more medial and a more lateral structure

## Directional Terms

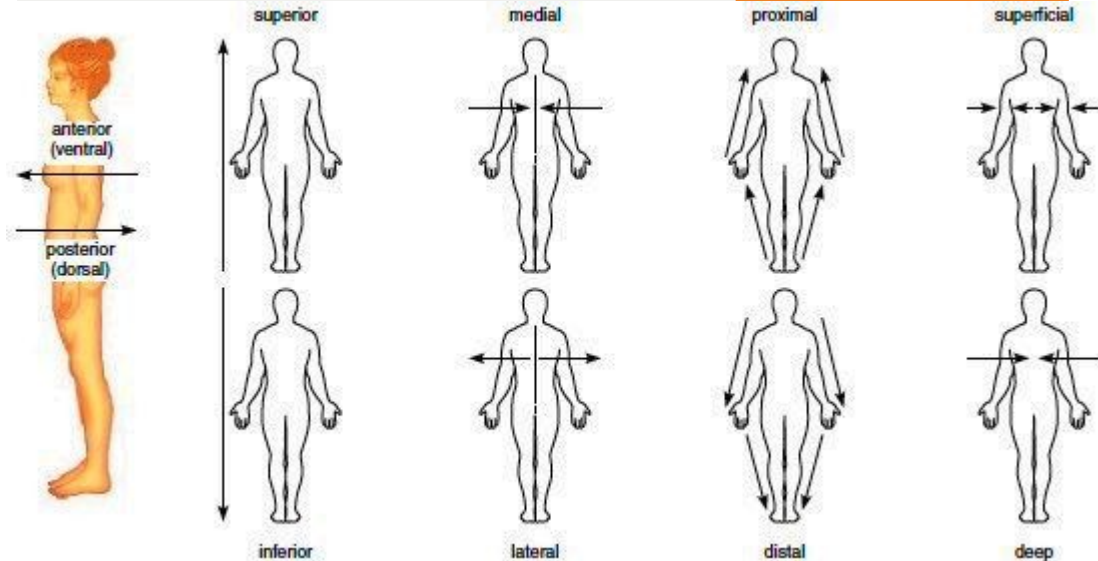
- **Medial** – toward midline, inner side
- **Lateral** – away from midline, outer side
- **Intermediate** – between a more medial or more lateral structure





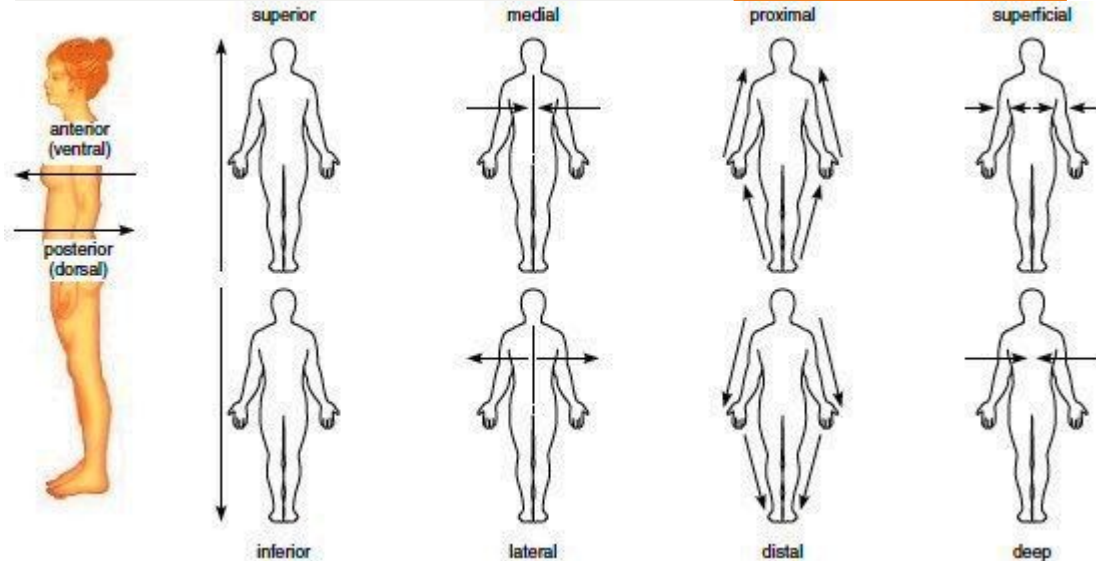
# Lateral

Away from the midline of the body; on the outer side



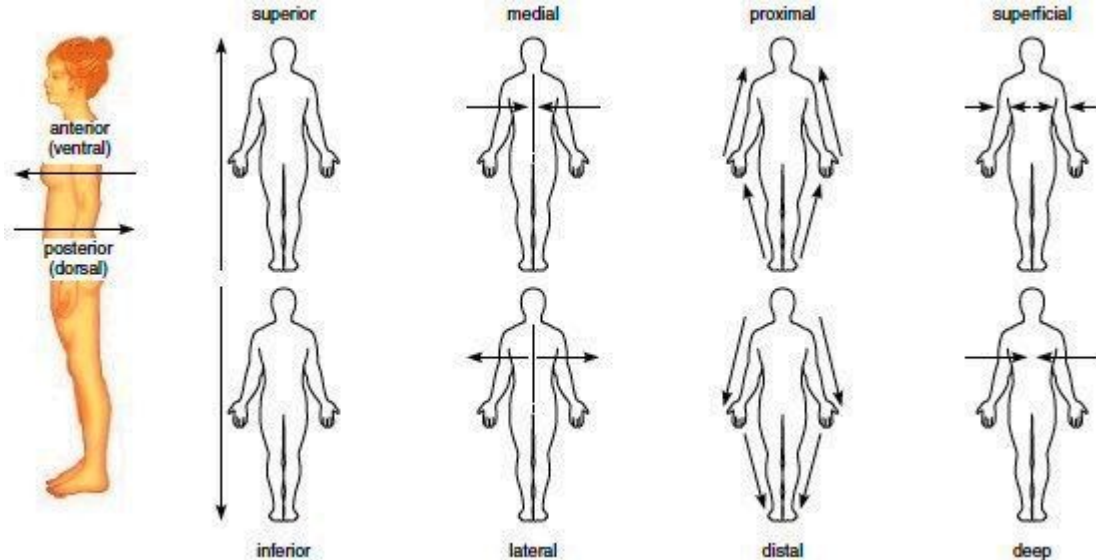
# Proximal

Close to the origin of the body part or at the point of attachment of a limb to the body trunk



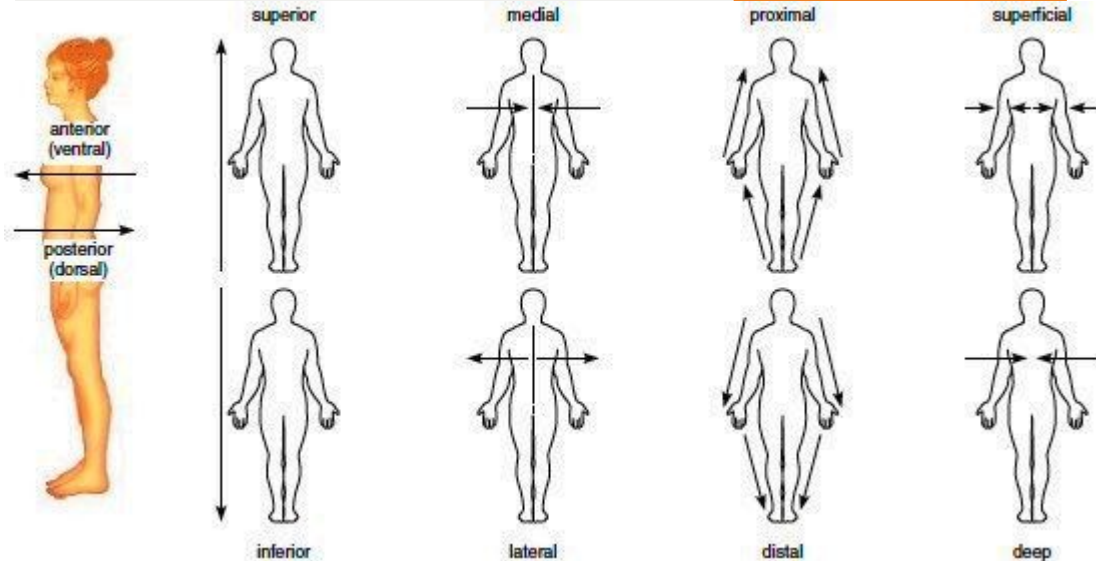
# Posterior (Dorsal)

Toward or at the backside of the body; behind



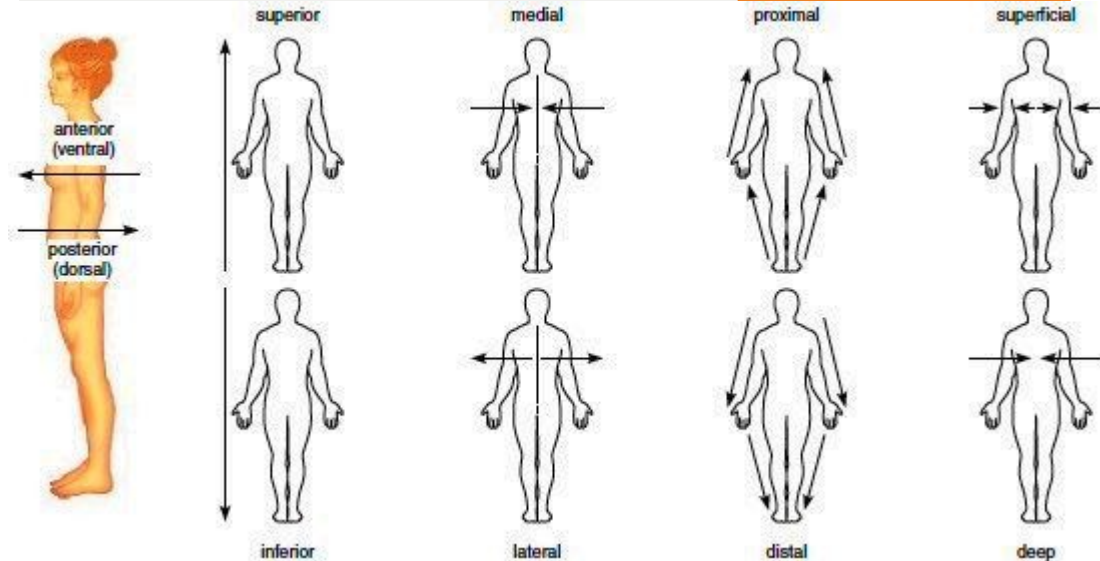
# Medial

Toward or at the midline of the body; on the inner side of



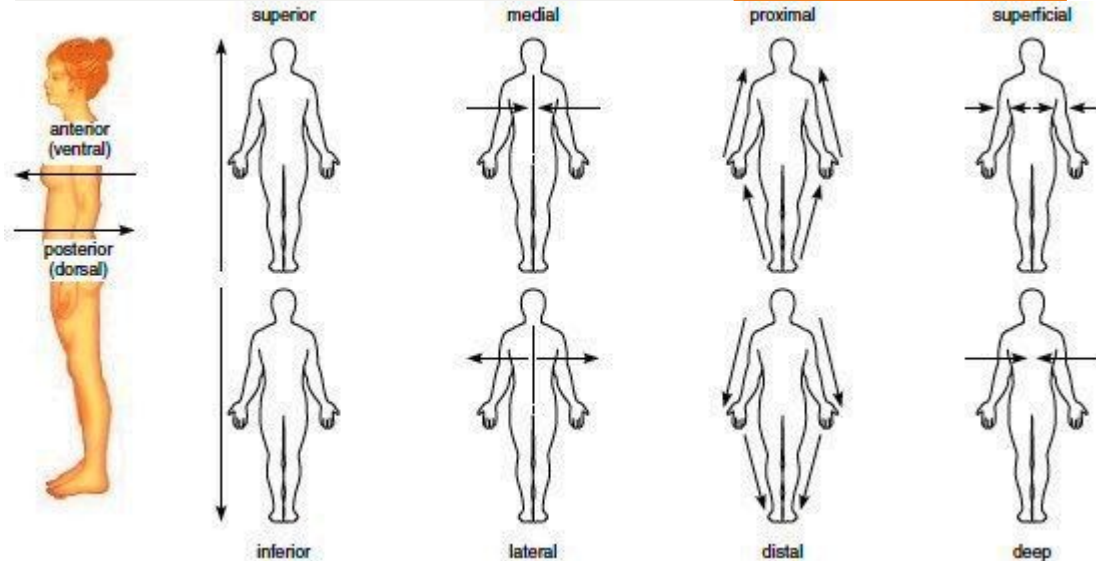
# Superior (Cranial or Cephalad)

Toward the head end of the body; upper



# Superficial (External)

Toward or at the body surface



A stylized illustration of space elements. It features a teal rocket ship with a white window and a small flame at the bottom, positioned to the left of a large orange planet with two rings. Three yellow stars are scattered around the planet and rocket. The background is white with various colored circles and shapes in shades of orange, red, yellow, teal, and light blue.

# Regional Terms

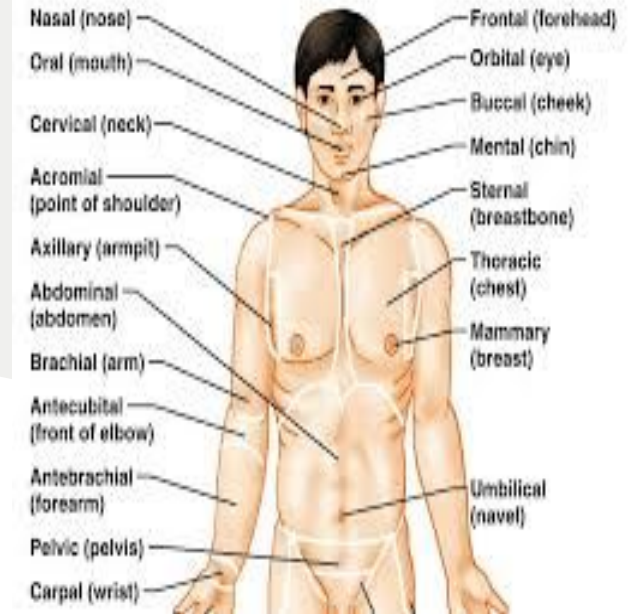
1

# Anterior Body Landmarks



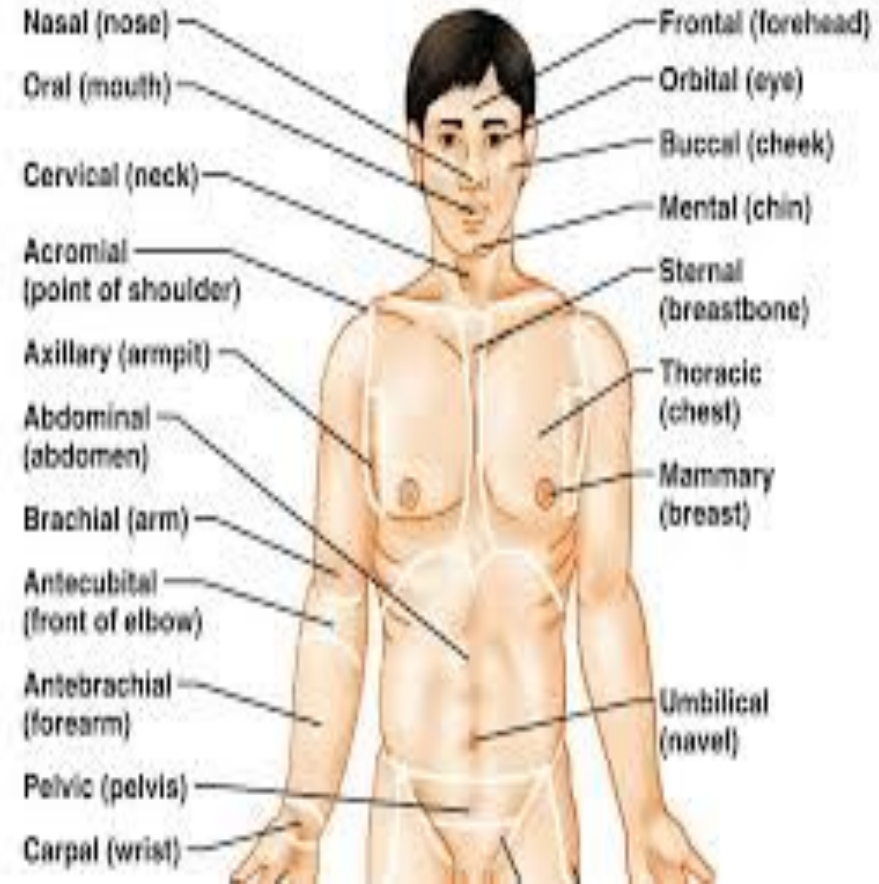
# Abdominal

Anterior body trunk  
inferior to the ribs

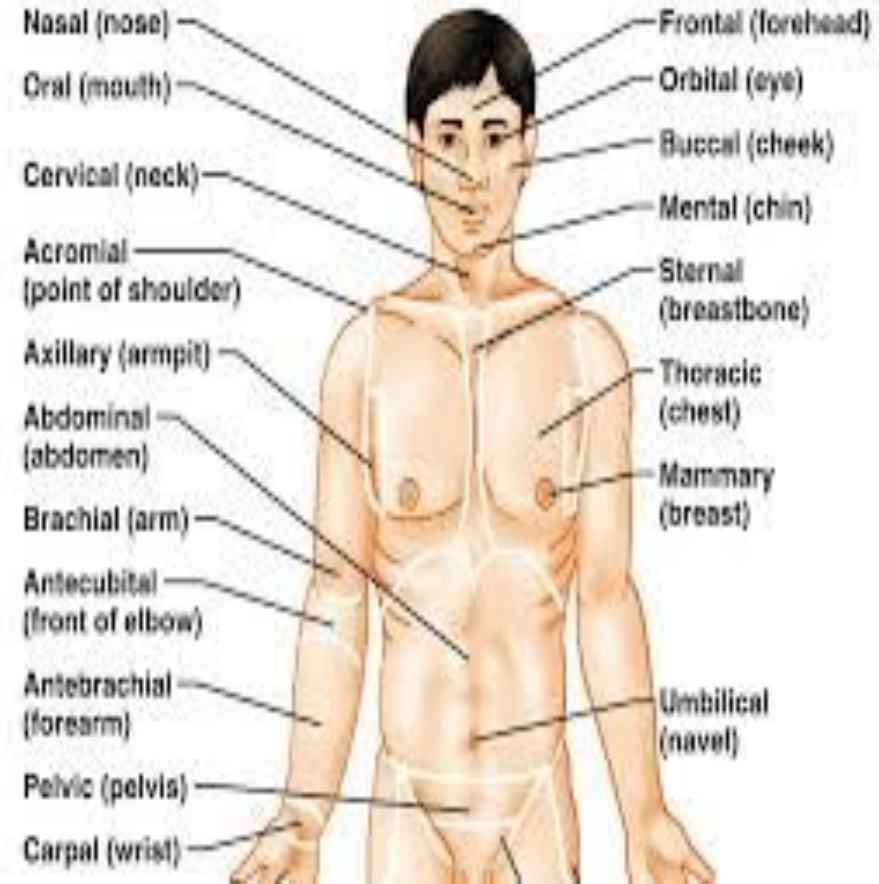


# Acromial

## Point of shoulder

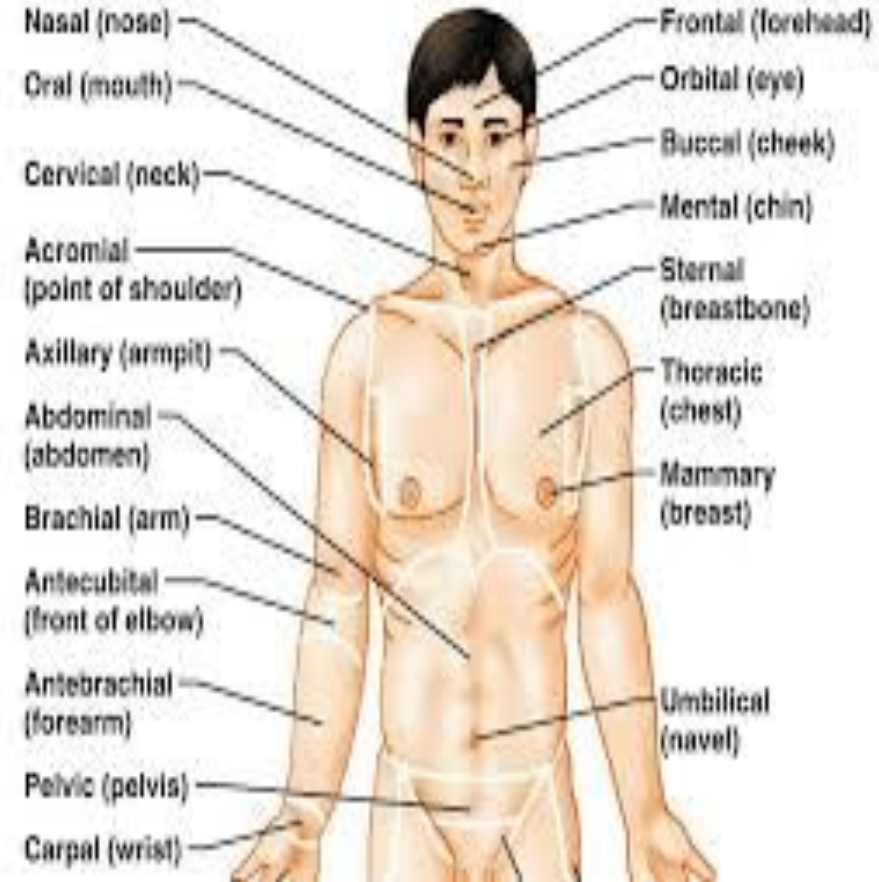


# Antebrachial Forearm

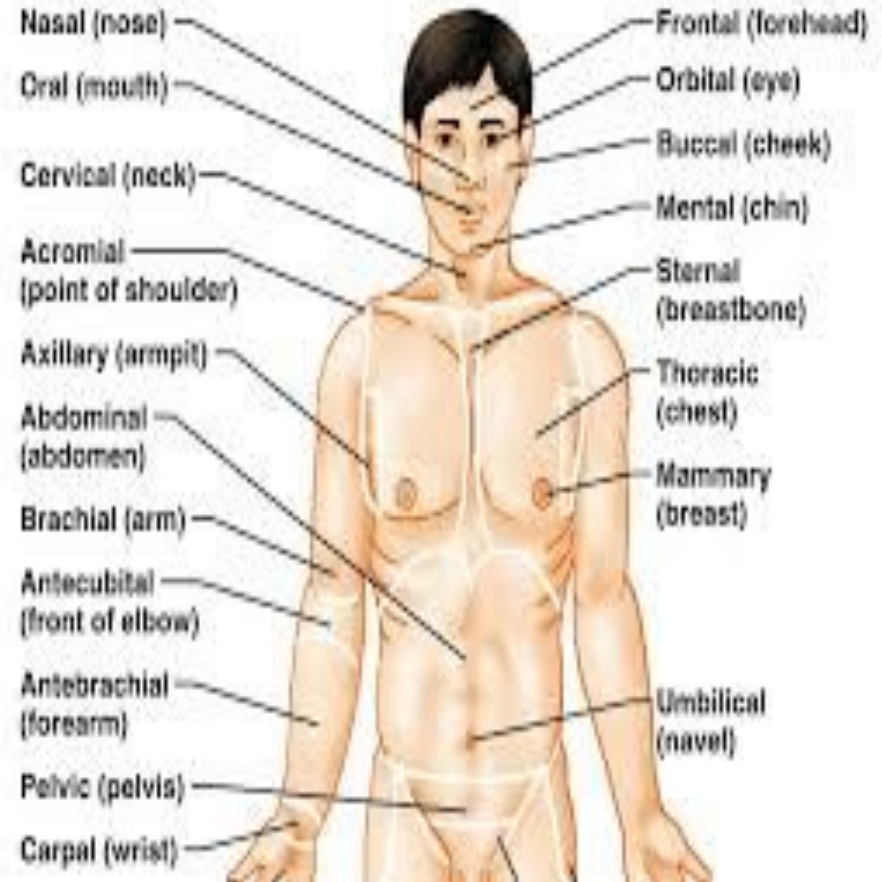


# Antecubital

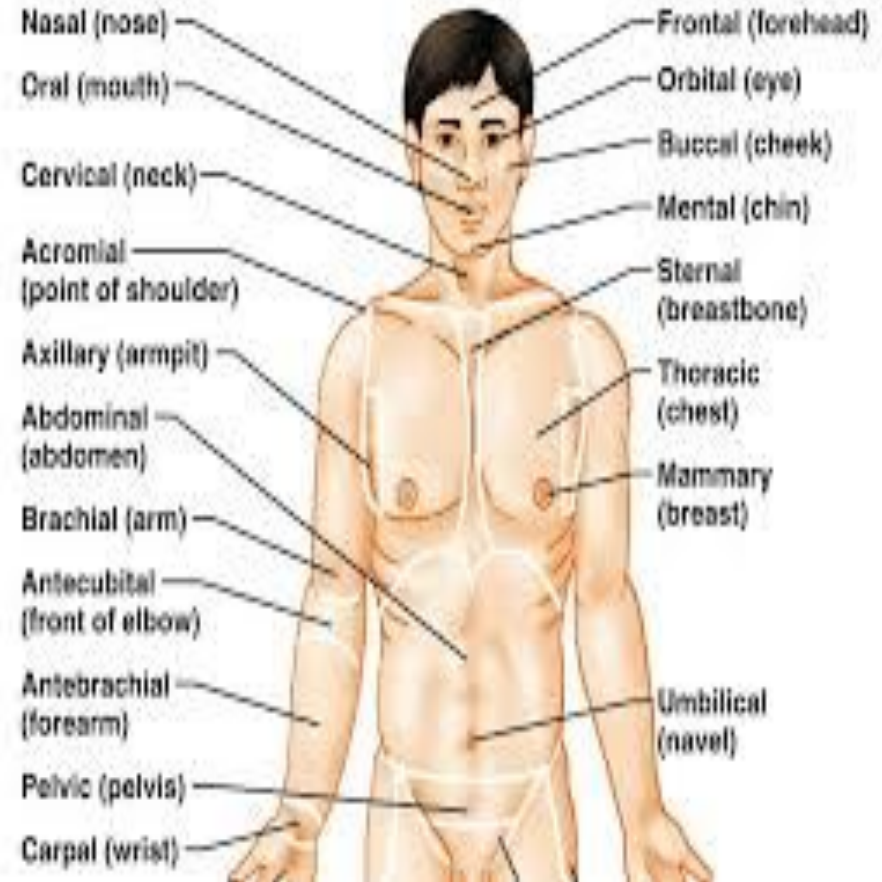
Anterior surface of  
elbow



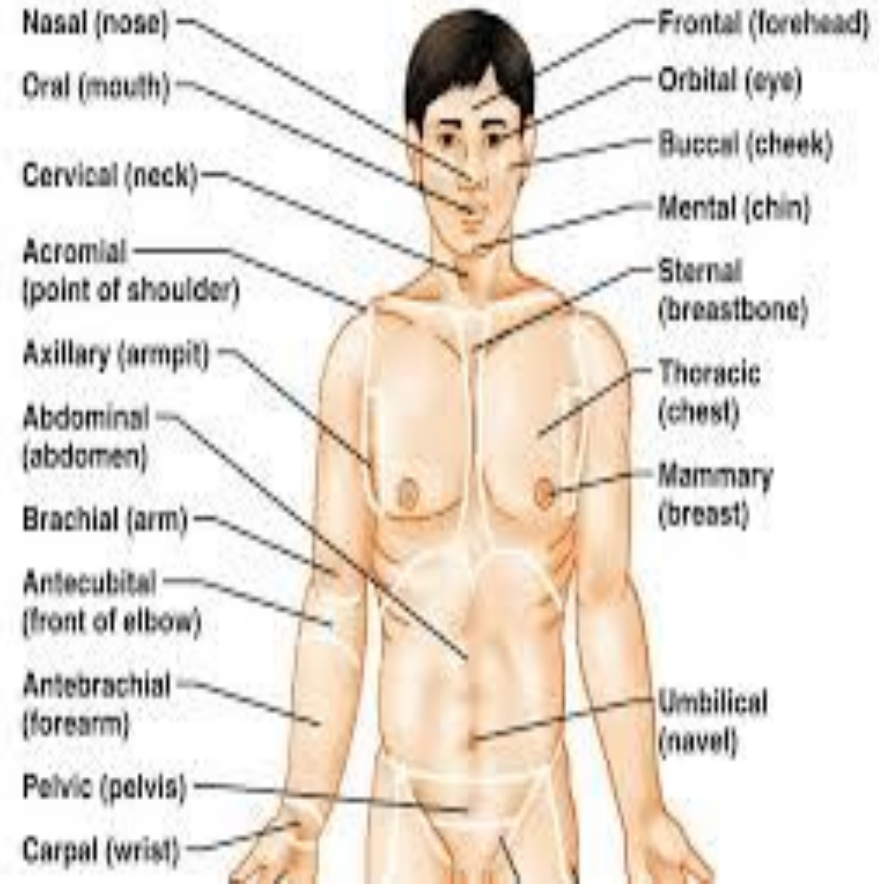
# Axillary Armpit



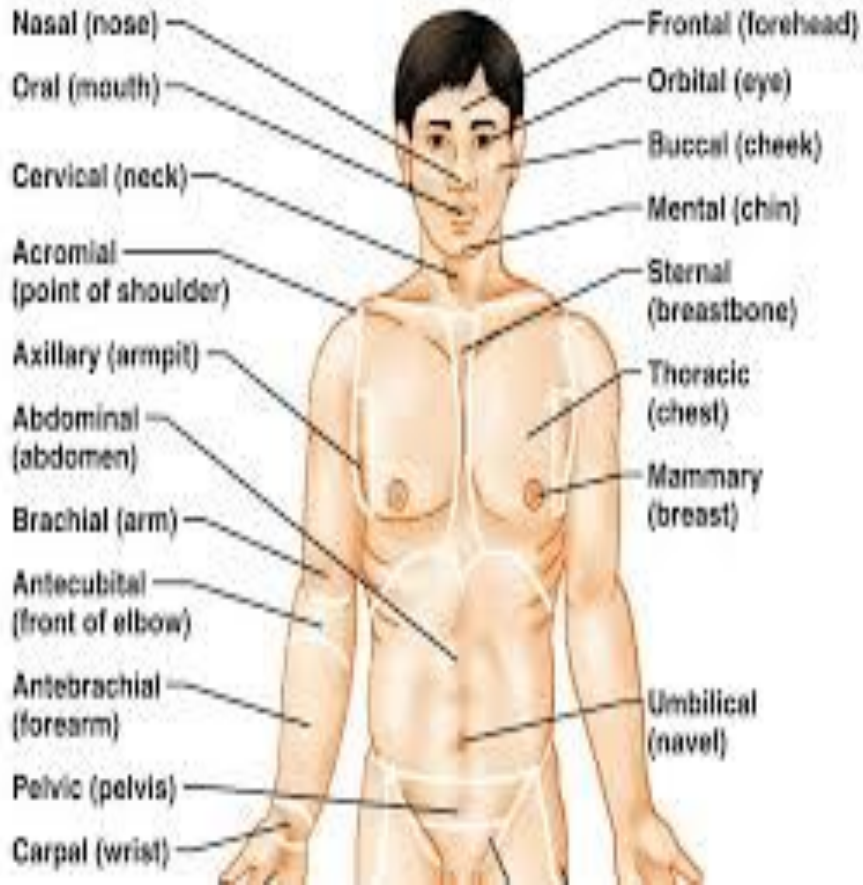
# Brachial Arm



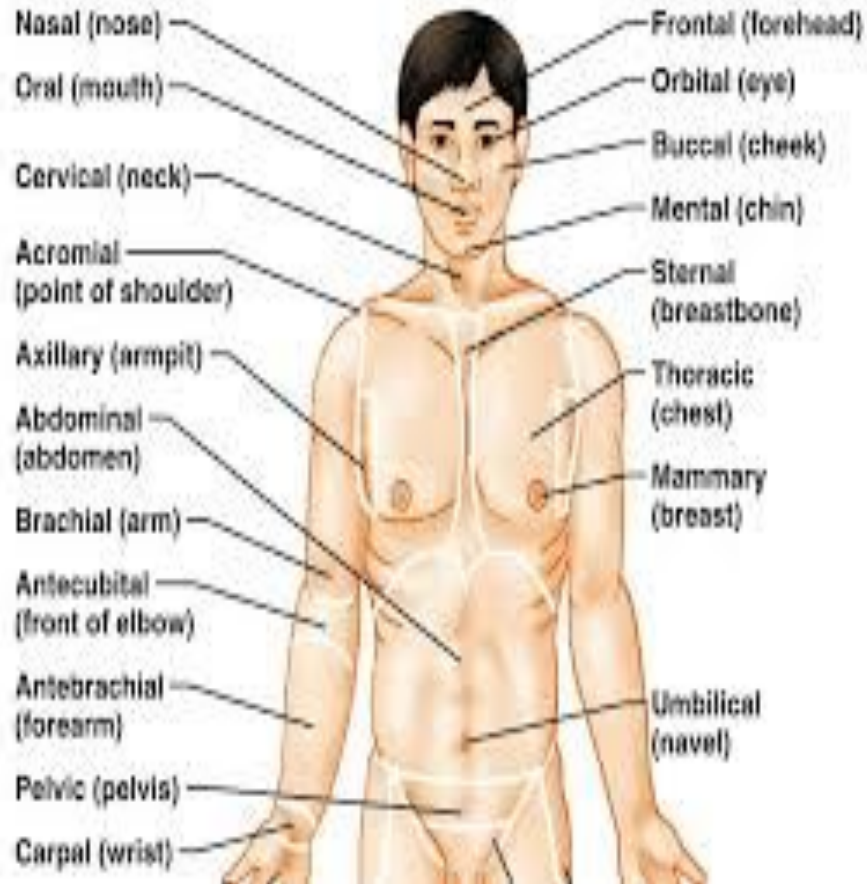
# Sternal Breastbone Area



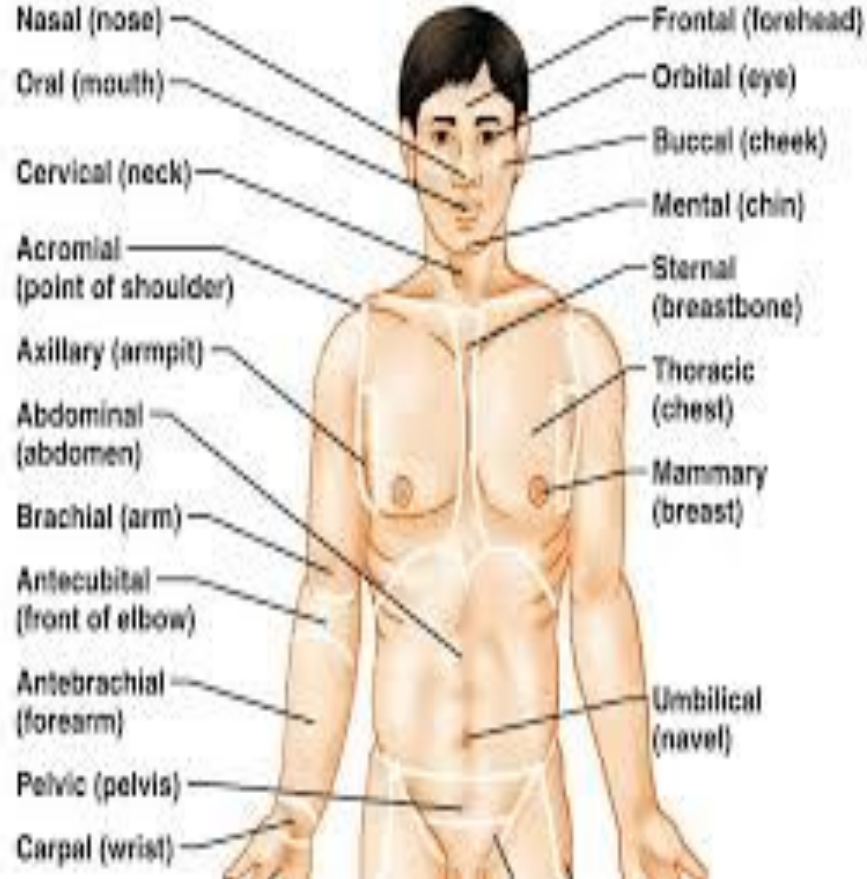
# Buccal Cheek Area







# Carpal Wrist

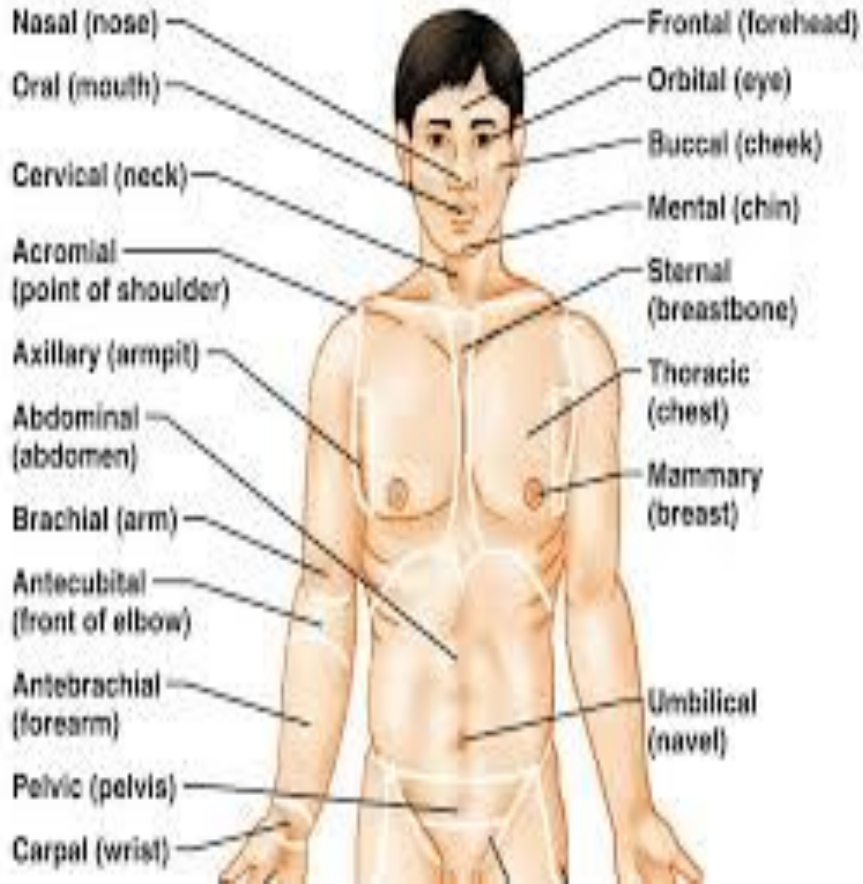


# Cervical Neck Region



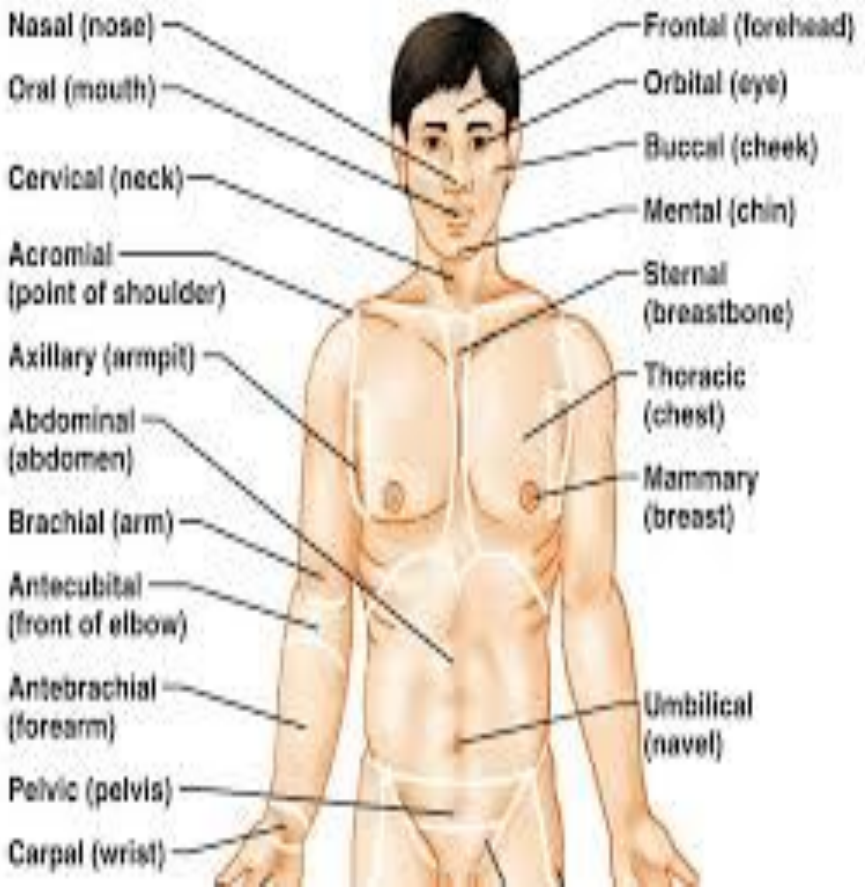
# Oral Mouth

# Orbital Eye Area





# Thoracic Chest

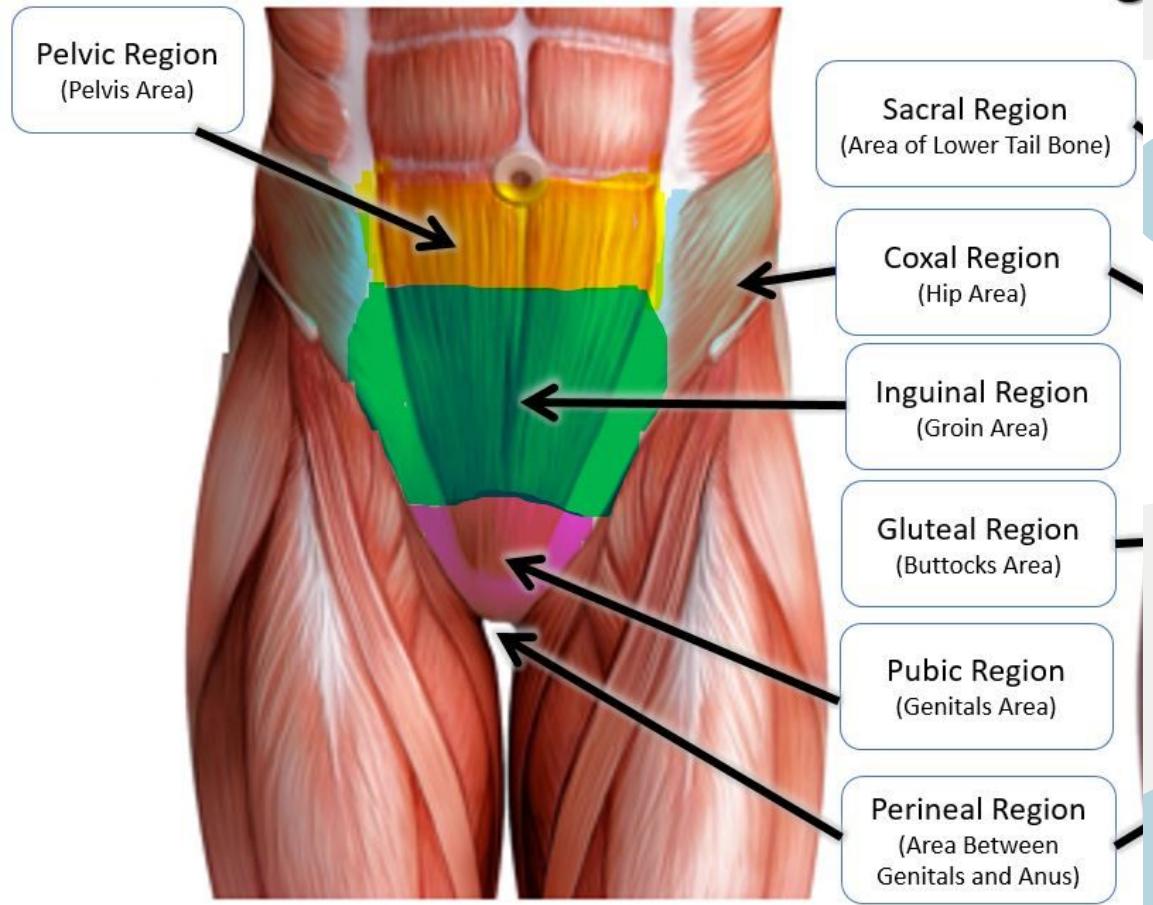


# Nasal Nose Area



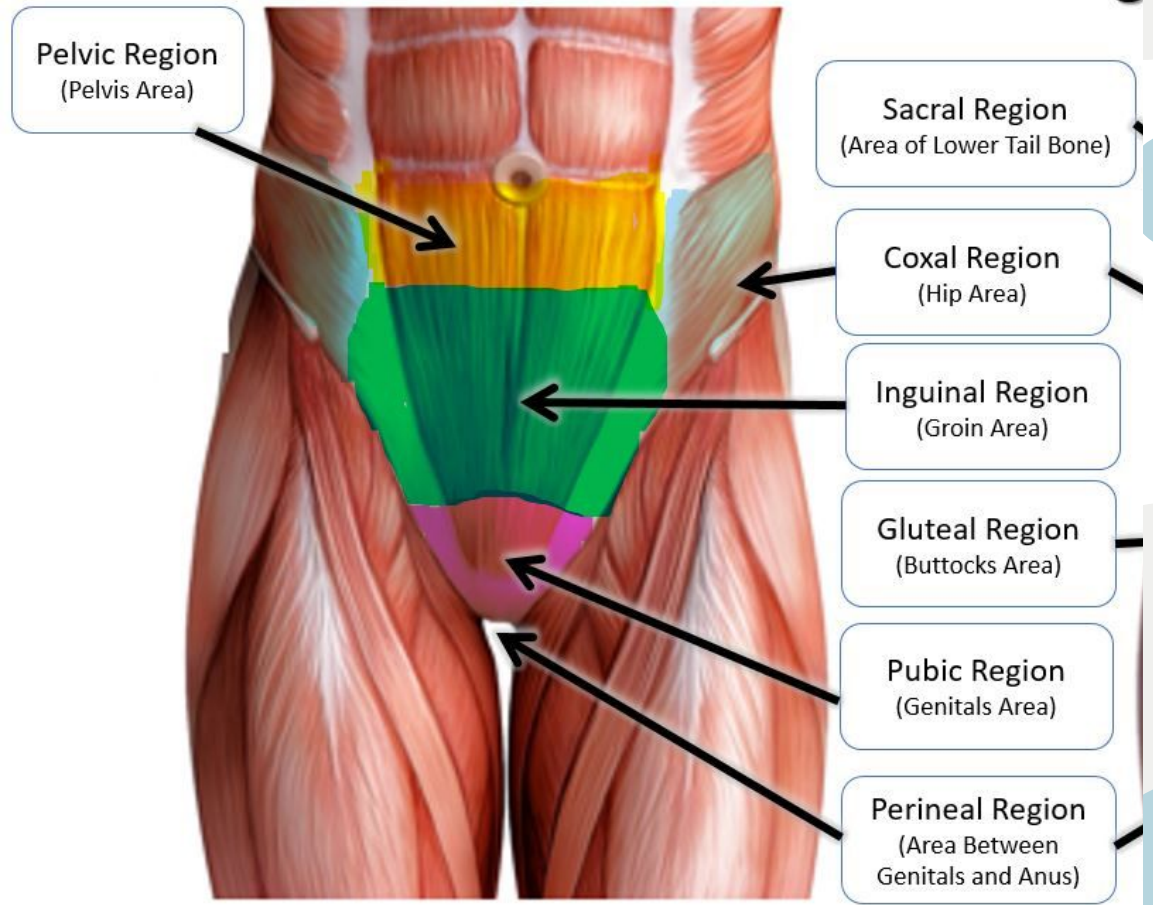
# Umbilical Navel

# Coxal Hip Area

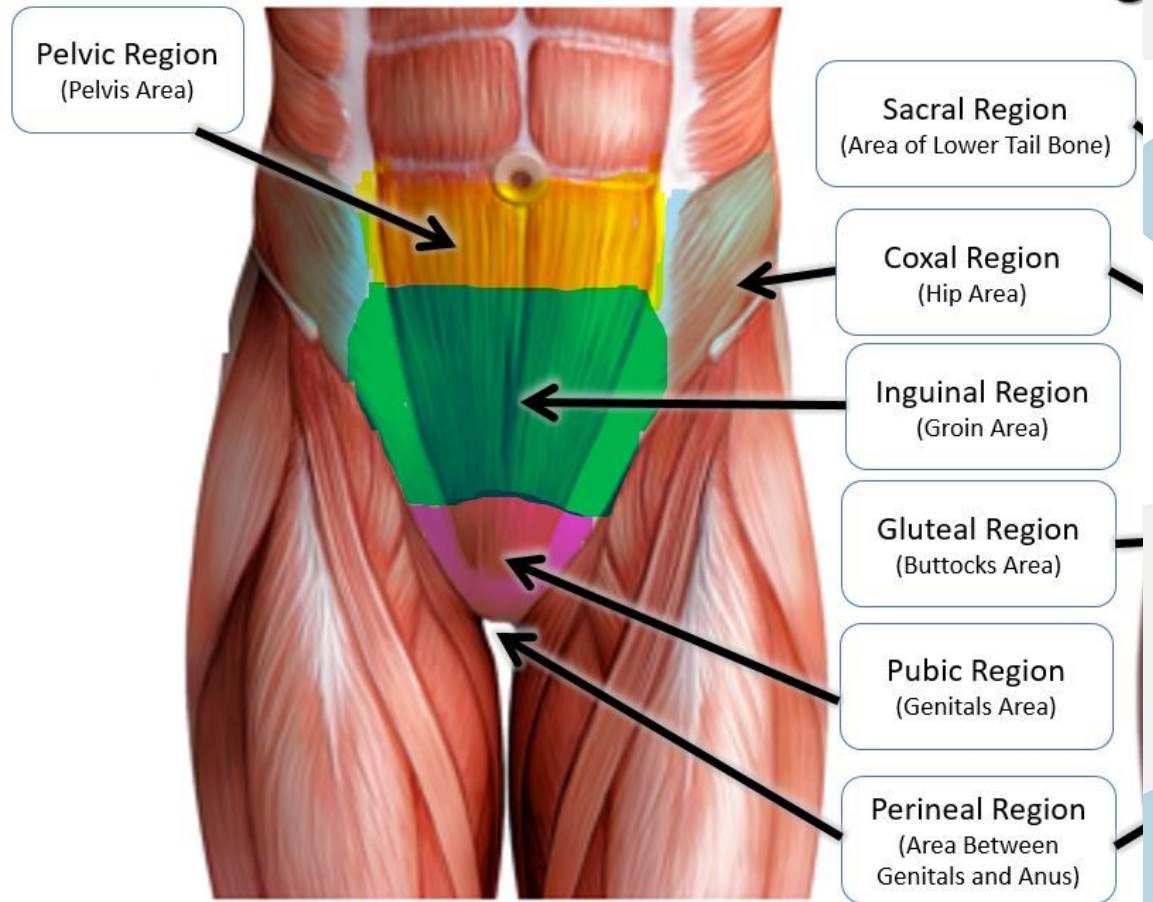




# Pubic Genital Region

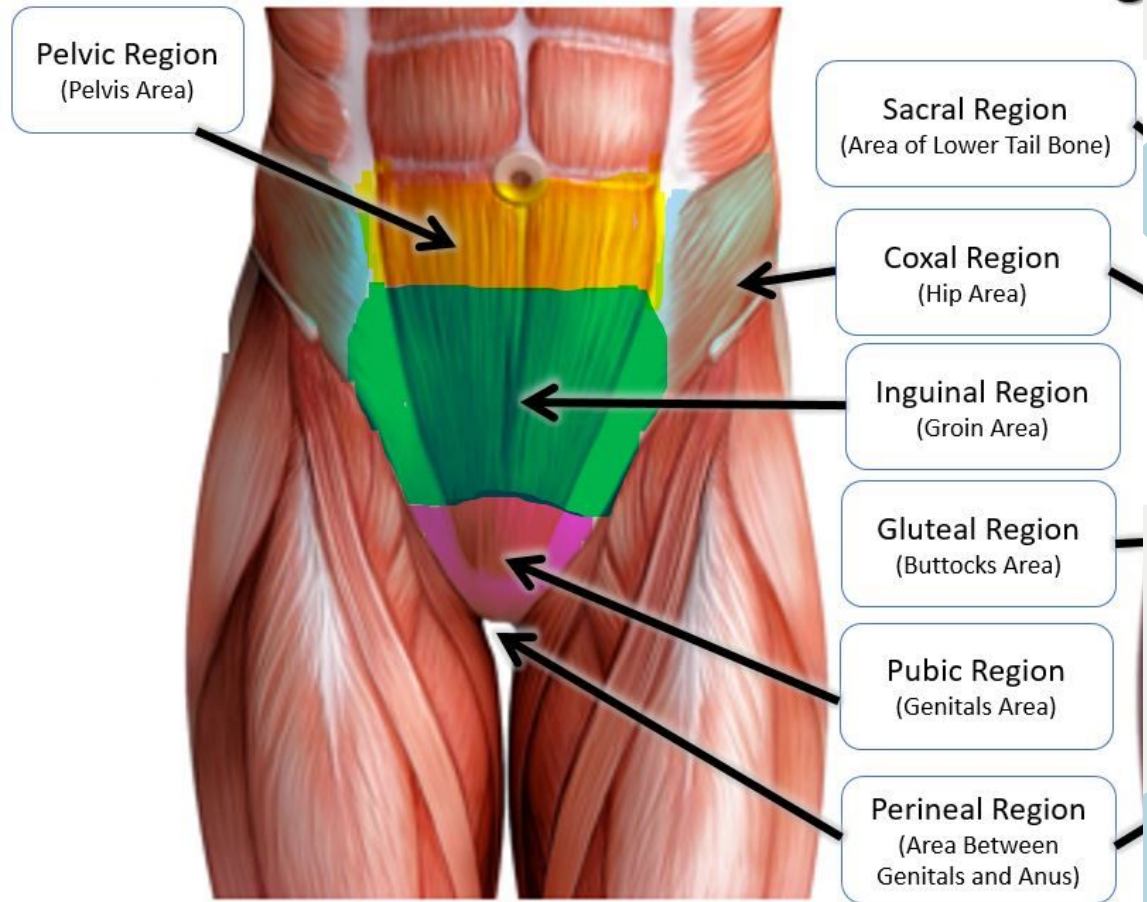


# Inguinal Groin Area



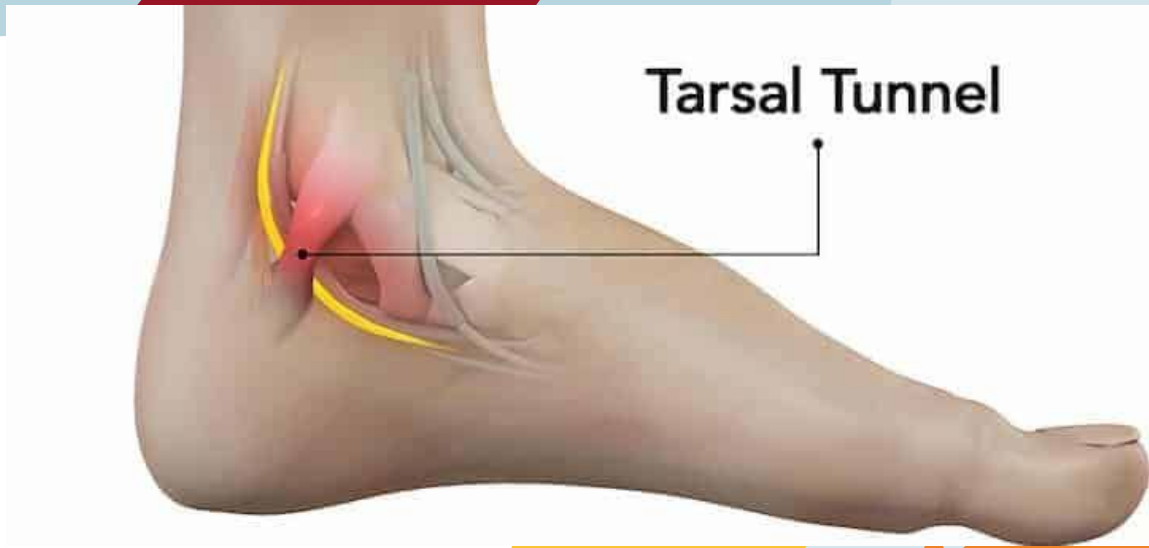
# Pelvic

Area overlying  
the pelvis  
anteriorly



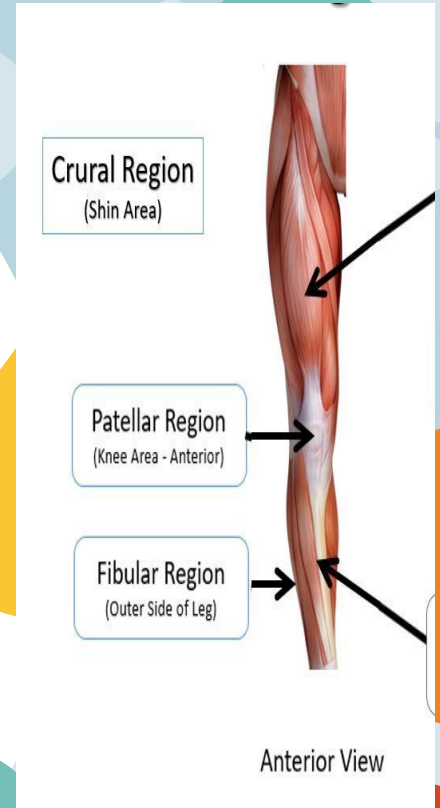
# Tarsal

## Ankle Region

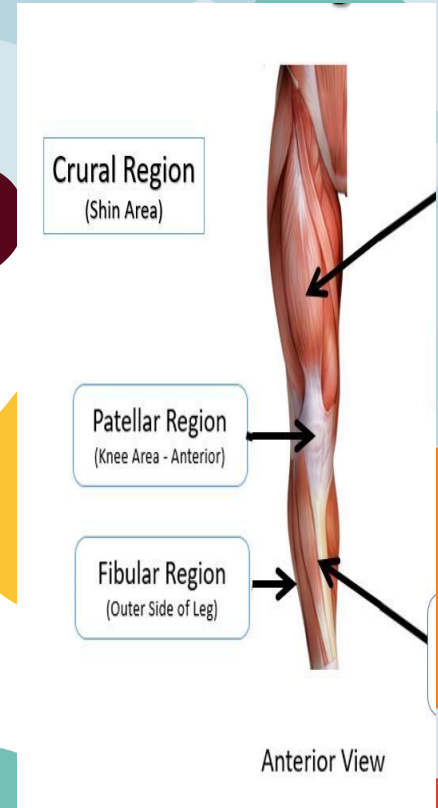


# Patellar

## Anterior Knee

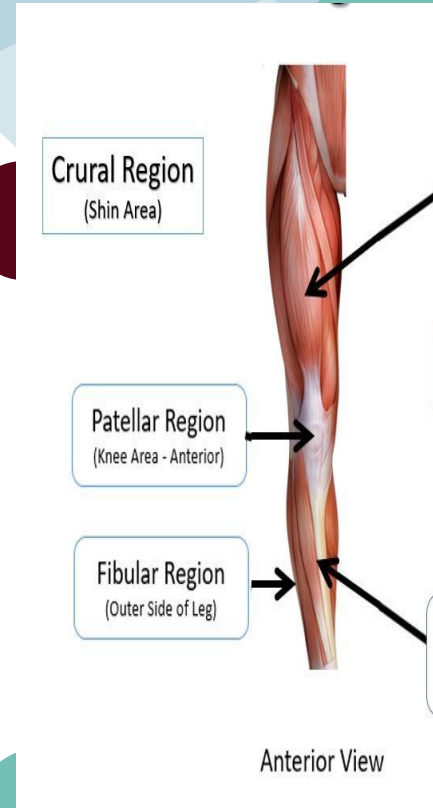


# Crural Leg



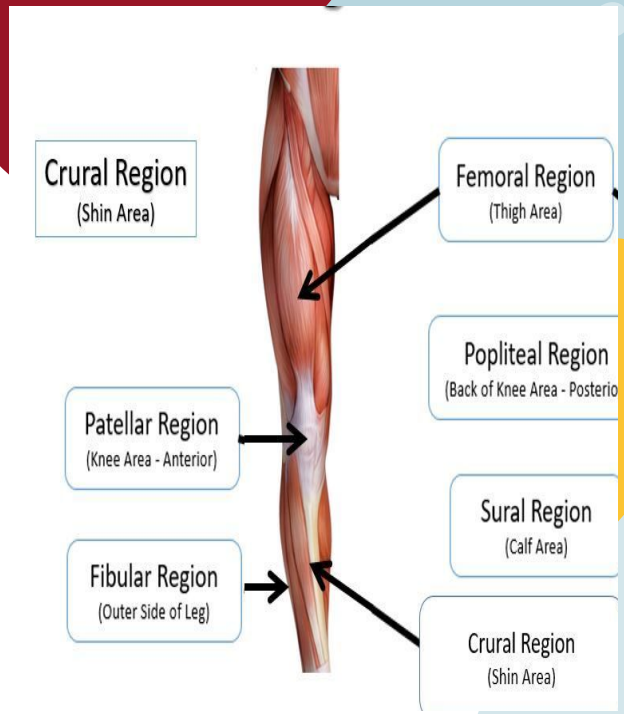
# Fibular

## Lateral Part of Leg



# Femoral

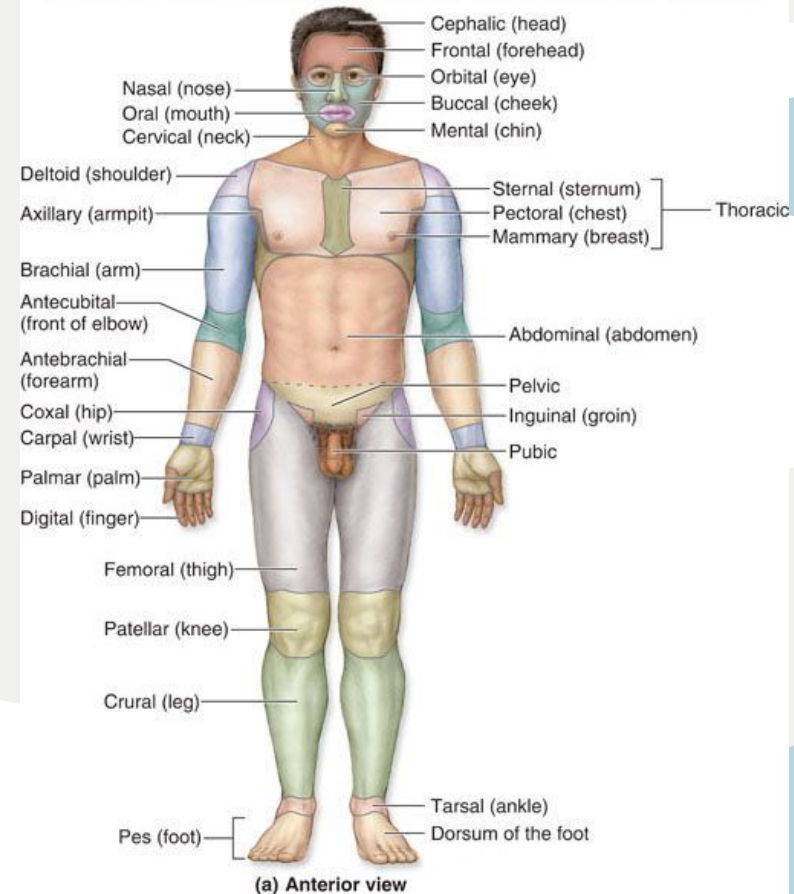
## Anterior Thigh





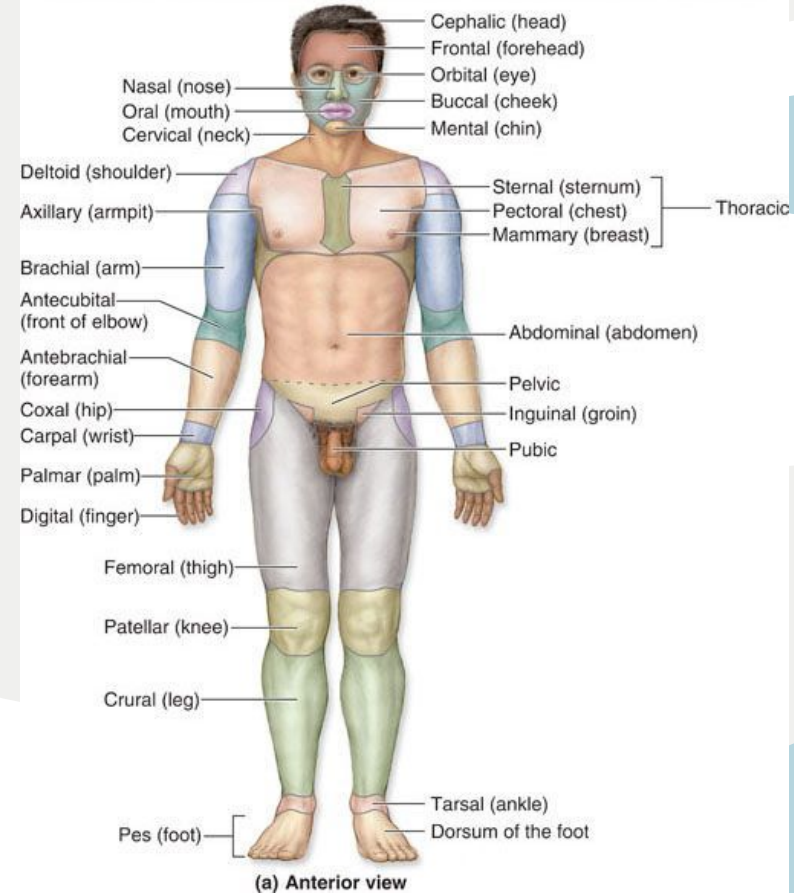
# Deltoid

Curve of shoulder formed by large deltoid muscle.



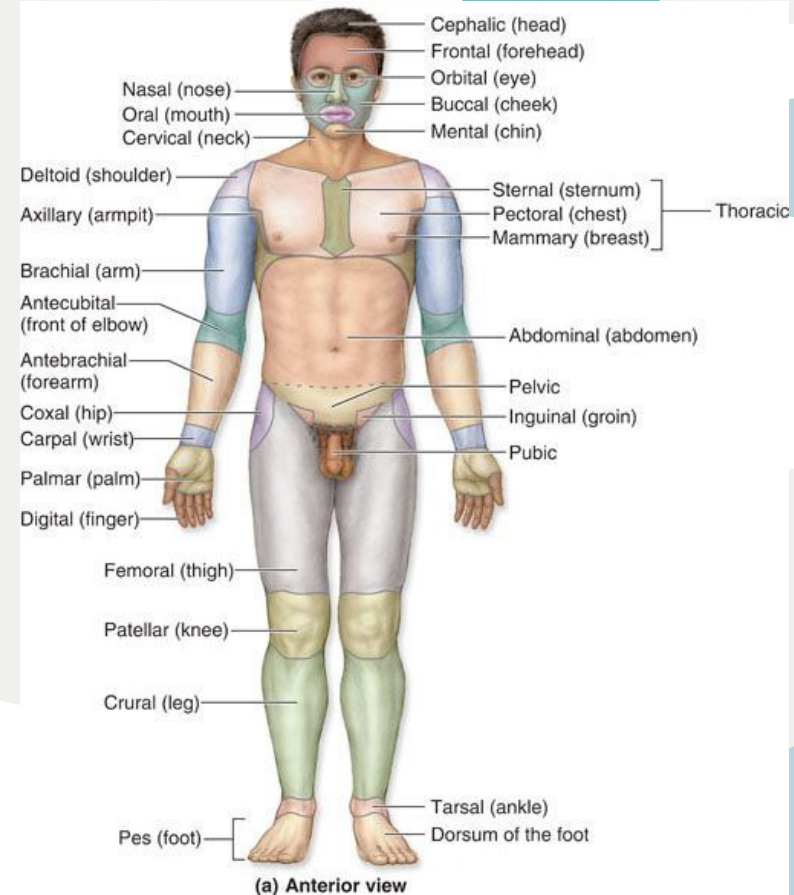
# Digital

Fingers, toes



# Frontal

Curve of shoulder formed by large deltoid muscle.





# Posterior Body Landmarks

# Calcaneal

Heel of foot

## Body Landmarks

• Posterior

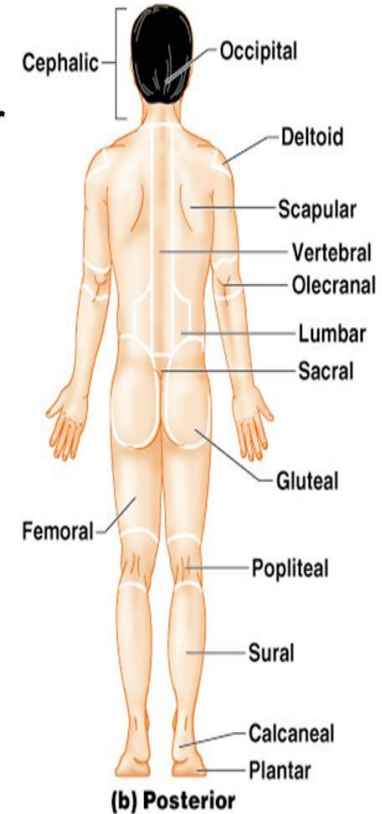


Figure 1.5b

**Cephalic**

Head

# Body Landmarks

• Posterior

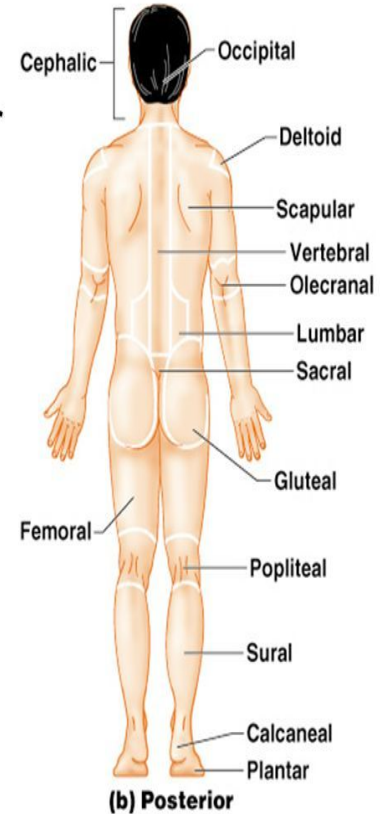


Figure 1.5b

# Femoral

Posterior Thigh

## Body Landmarks

• Posterior

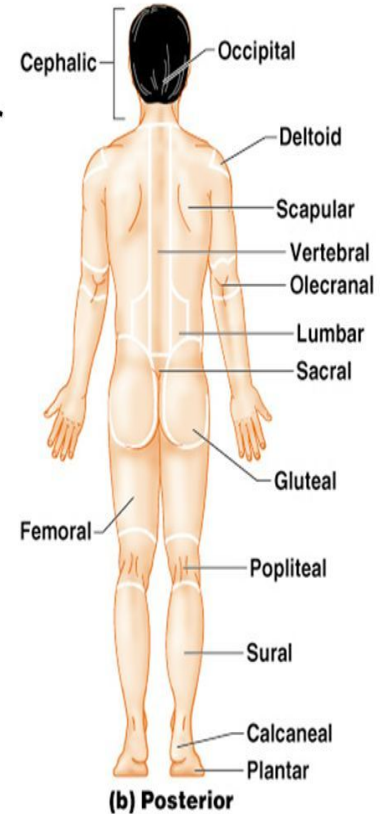


Figure 1.5b

Gluteal

Buttocks

# Body Landmarks

• Posterior

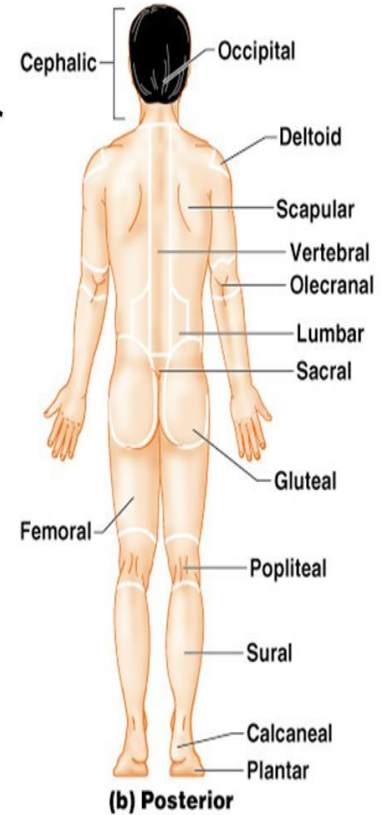


Figure 1.5b



# Lumbar

Area of back between ribs and hips;  
the loin

## Body Landmarks

• Posterior

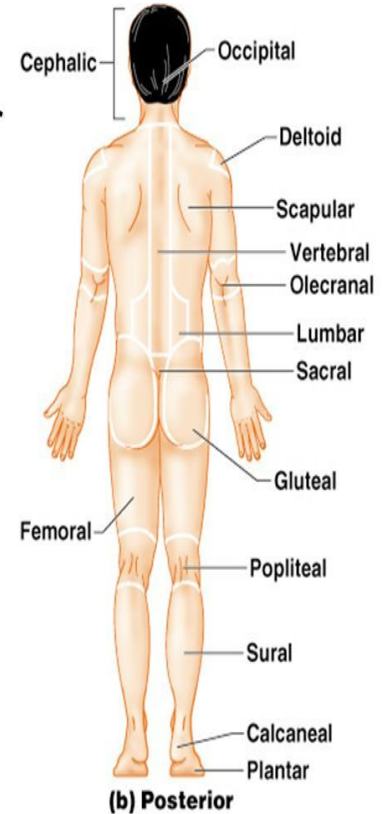


Figure 1.5b

# Occipital

Posterior surface of head or base of skull

## Body Landmarks

- Posterior

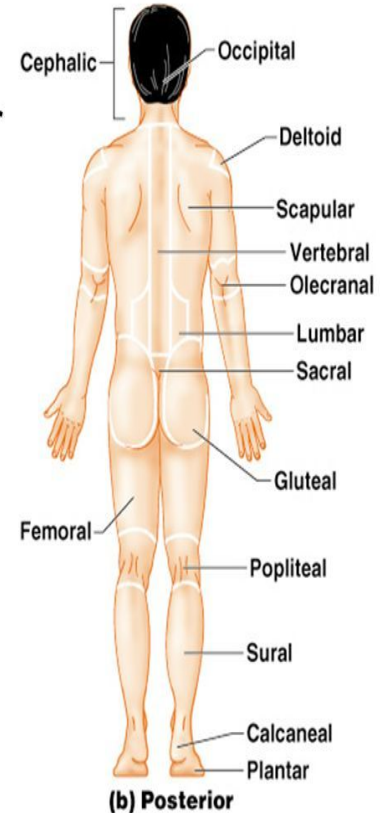


Figure 1.5b

# Popliteal

Posterior knee area

## Body Landmarks

• Posterior

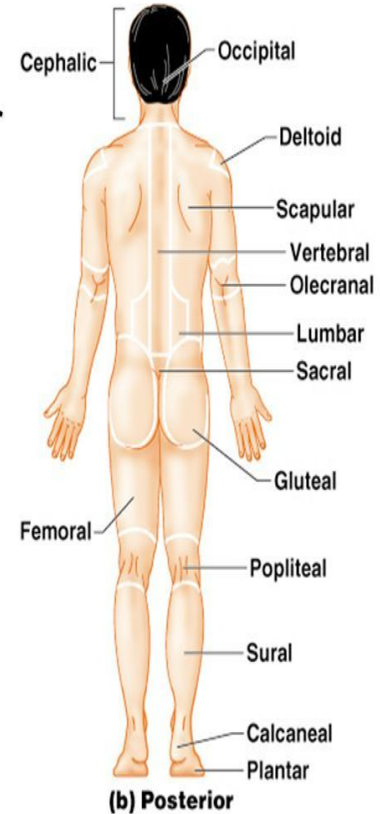


Figure 1.5b

# Sacral

Area between hips

## Body Landmarks

• Posterior

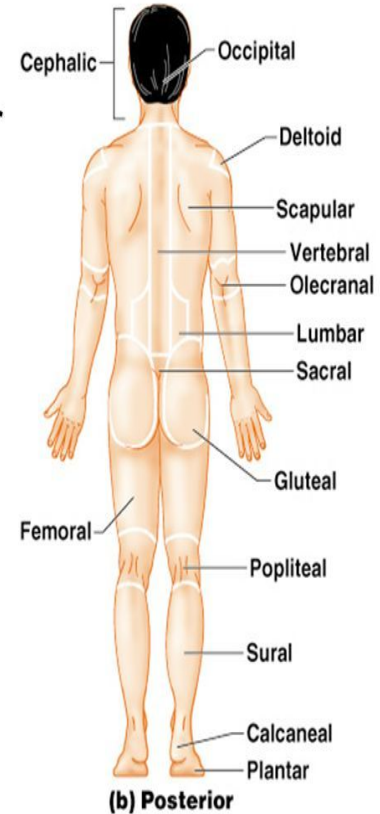


Figure 1.5b

# Scapular

Shoulder blade region

## Body Landmarks

• Posterior

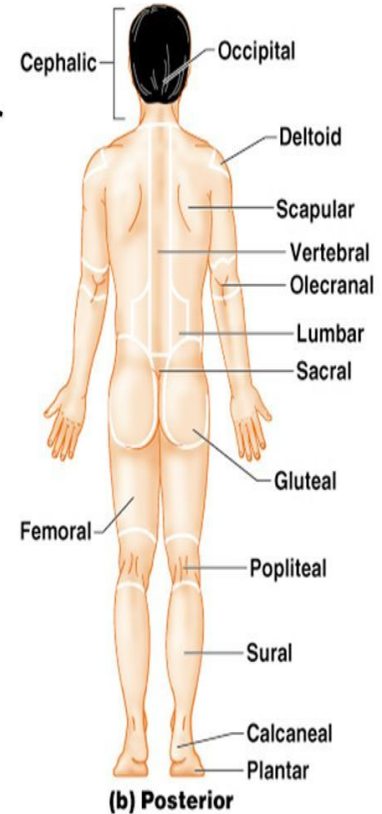


Figure 1.5b

# Sural

Posterior surface of leg; the calf

## Body Landmarks

- Posterior

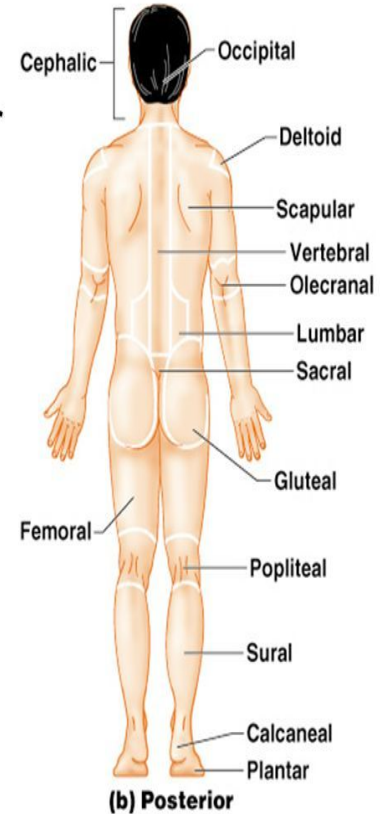


Figure 1.5b

# Vertebral

Area of spinal column

## Body Landmarks

• Posterior

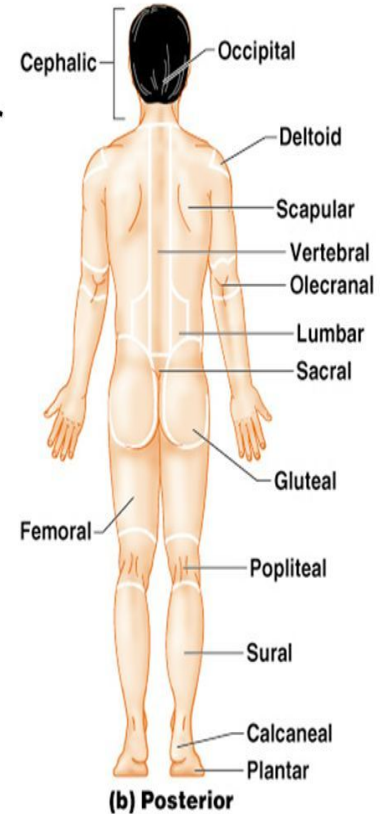
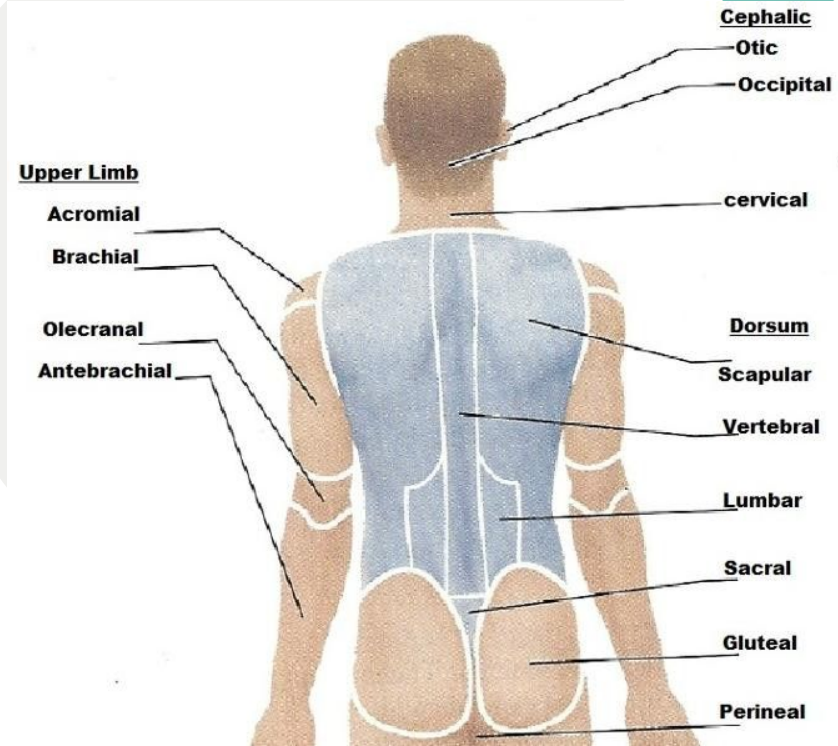


Figure 1.5b

# Olecranal

Posterior surface of elbow





The background is a light blue color with various abstract shapes in orange, red, yellow, and teal. A large white circle is centered on the page, containing the text. The text is in a bold, sans-serif font. The main title is in orange, and the subtitle is in teal.

# Body Planes and Sections

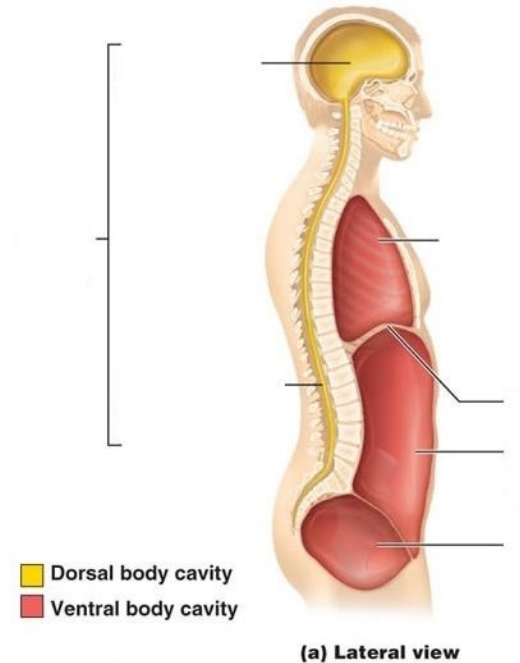
Body Cavities

## Dorsal Body Cavity

Has two subdivisions that are continuous with each other. The cranial and spinal cavities are what makes up the dorsal cavity

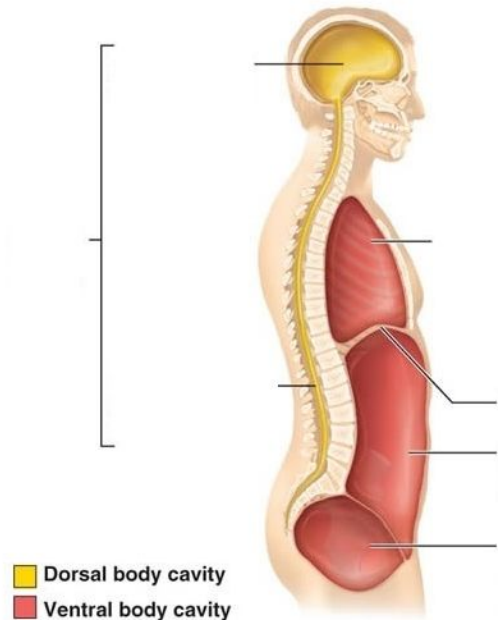
# Ventral Body Cavity

Contains all of the structures within the chest and abdomen



# Ventral Body Cavity

Contains all of the structures within the chest and abdomen



(a) Lateral view



# Abdominopelvic Regions

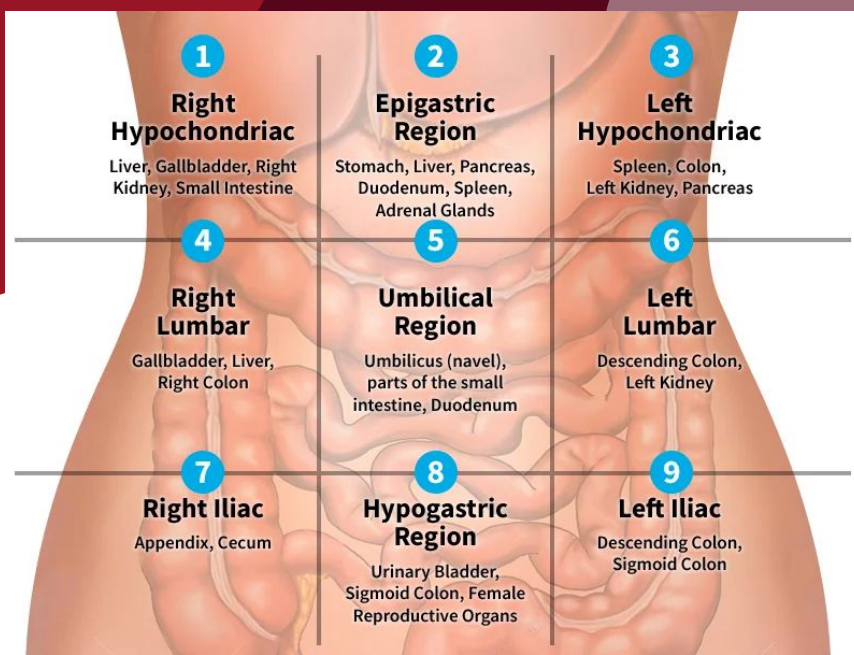


# Epigastric Region

Is located superior to the umbilical region

# Hypogastric Region

Located inferior to the umbilical region.  
Contains the urinary bladder, Sigmoid colon and female reproductive organs

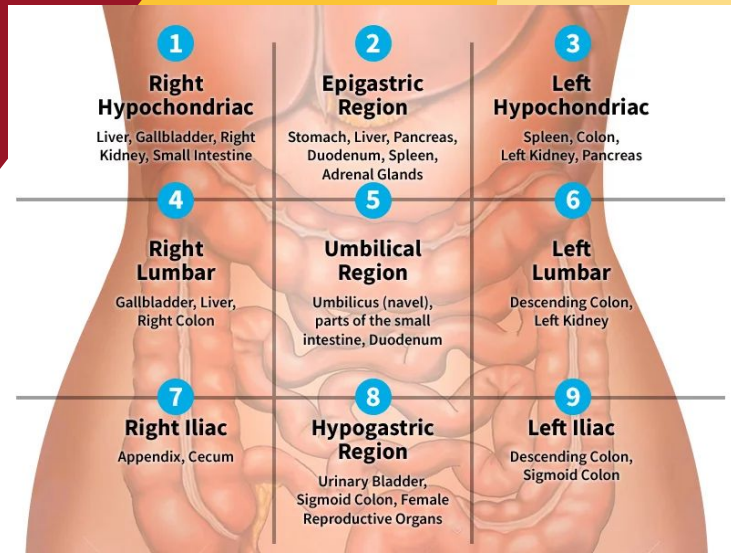


# Left and Right Hypochondriac Region

Flanks the epigastric region and contains the ribs.

The left contains the spleen, colon, left kidney, and pancreas.

The right contains the liver, gallbladder, right kidney and small intestines.



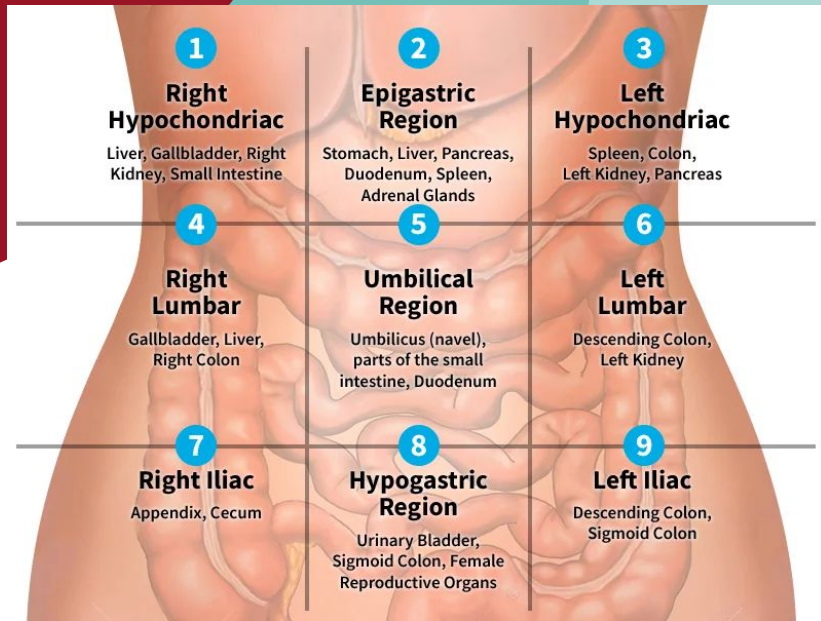


# Right and Left Iliac Region

Lateral to the hypogastric region

The right contains the appendix and cecum.

The left contains the descending colon and the Sigmoid colon

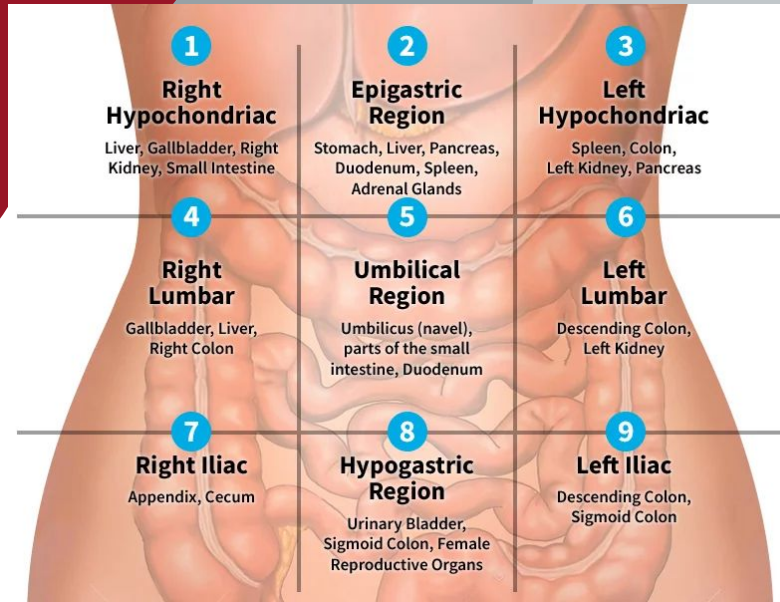


# Right and Left Lumbar Region

Lie lateral to the umbilical region

The left contains the descending colon and left kidney.

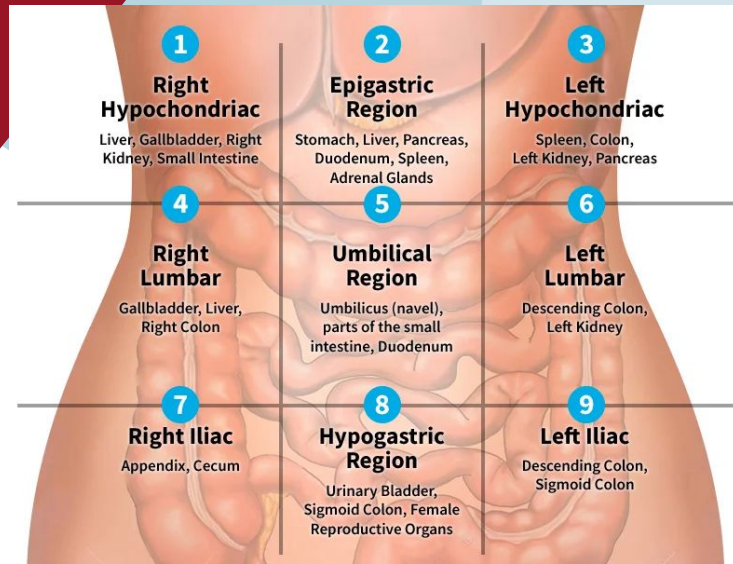
The right lumbar contains the gallbladder, liver and right colon



# Umbilical Region

The centermost region, deep to and surrounding the umbilicus

Contains the navel, part of the small intestine and the Duodenum.

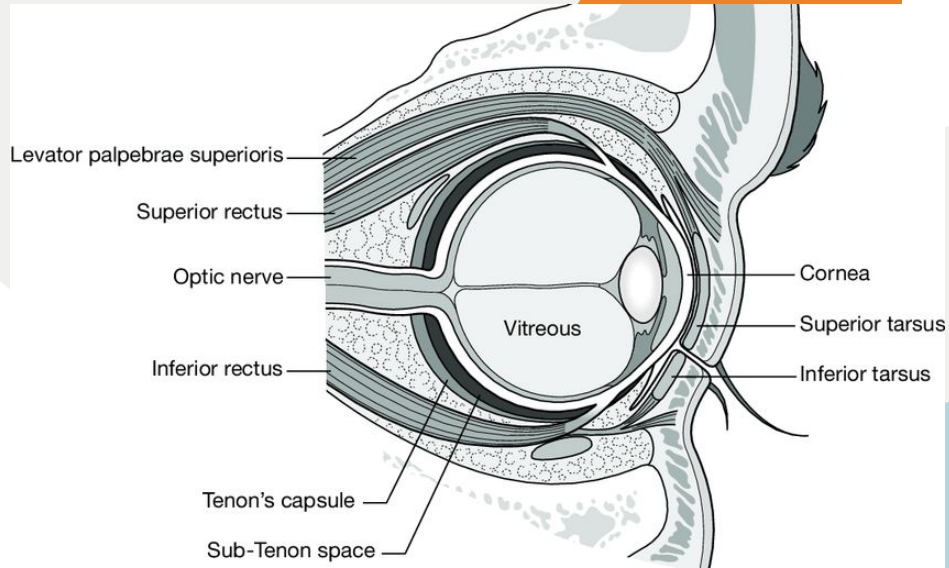


The image features a vibrant, abstract background composed of various organic shapes in shades of teal, yellow, orange, and maroon. A large, central orange circle serves as the primary backdrop for the text. The text 'Other Body Cavities' is written in a clean, white, sans-serif font, centered within this orange circle. The overall aesthetic is modern and colorful, with a playful, bubbly feel.

# Other Body Cavities

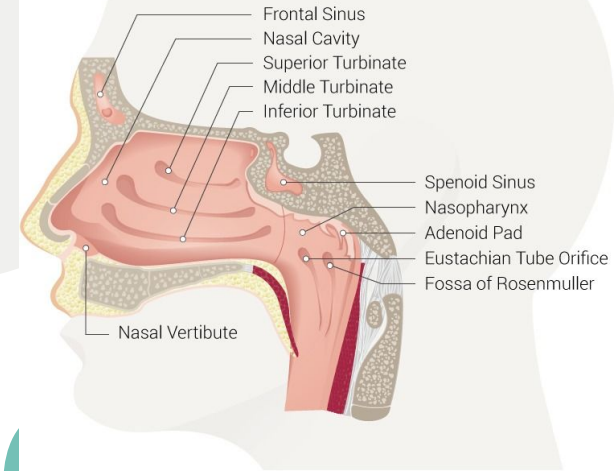
# Orbital Cavity

The orbital cavity orbits in the skull house the eyes and present them in an anterior position



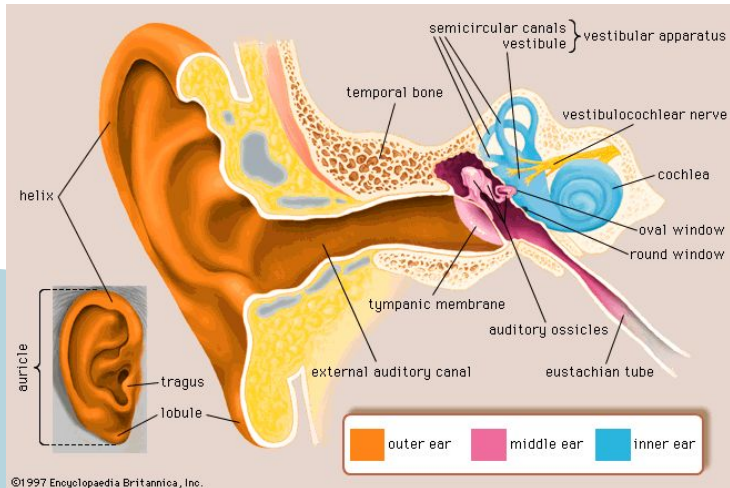
# Nasal Cavity

Located within and posterior to the nose, the nasal cavity is part of the respiratory system passageways



# Middle Ear Cavity

The middle ear cavities carved into the skull lie just medial to the eardrums. These cavities contain tiny bones that transmit sound vibrations to the hearing receptors in the inner ear



# Oral and Digestive Cavities

The cavity is part of and continuous with the cavity of the digestive organs, which opens to the exterior of the anus.

