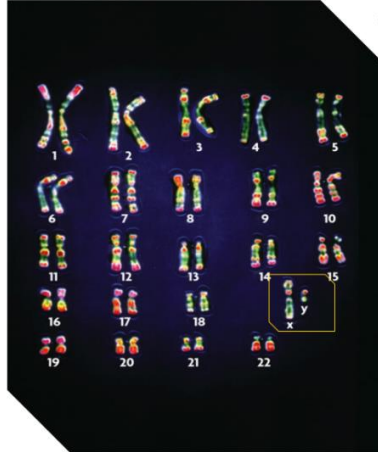


6.1 Chromosomes and Meiosis

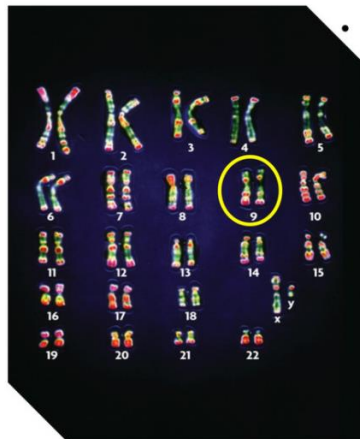
• Your cells have autosomes and sex chromosomes.



- 1. **AUTOSOMES**
 - Chromosomes that contain genes not directly related to the sex of an organism.
 - Refers to pair 1 to 22

6.1 Chromosomes and Meiosis

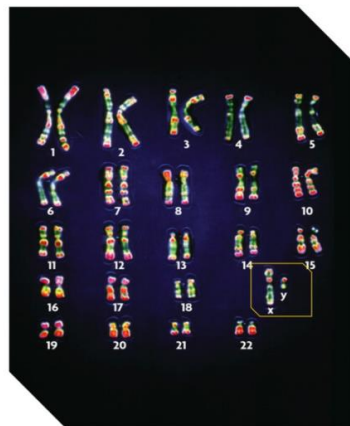
• Your cells have autosomes and sex chromosomes.



- 2. **Homologous Chromosomes**
 - A pair of chromosomes, inherited one from each parent, carry the same genes although the genes may code for different traits
 - Example – pair #9

6.1 Chromosomes and Meiosis

• Your cells have autosomes and sex chromosomes.



- 3. **Sex Chromosomes**
 - Contain genes that directly control the development of sexual characteristics.
 - Pair # 23