

6.4 Traits, Genes, and Alleles

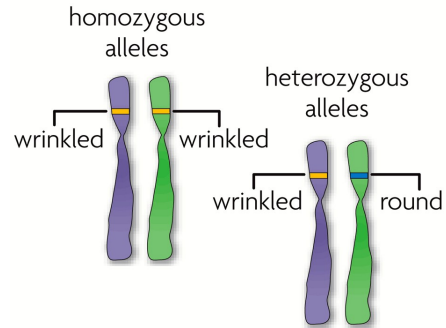
- An **allele** is any alternative form of a gene occurring at a specific **locus** on a chromosome.

– Each parent donates one allele for every gene.

– **Homozygous** describes two alleles that are the **same** at a specific locus.

– **Heterozygous** describes two alleles that are **different** at a specific locus.

Homozygous alleles are identical to each other.



Heterozygous alleles are different from each other.

6.4 Traits, Genes, and Alleles

- **Homologous chromosomes** are two chromosomes, one from the mother and one from the father, that have the same length, overall appearance, and **genes**, although the **alleles** may differ.

