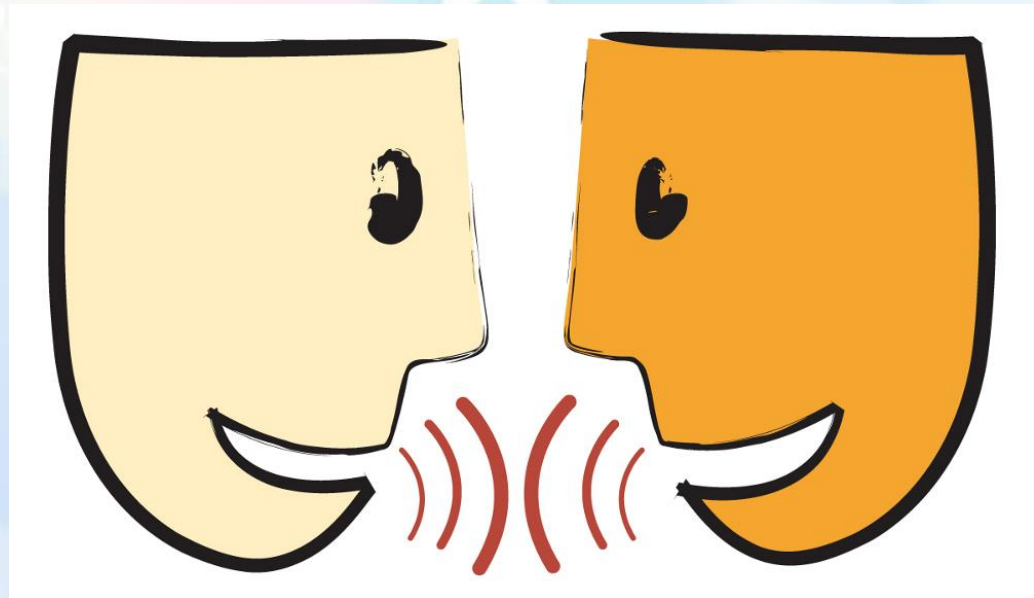


The Language of Anatomy

Jane Doe



A. Anatomical Position

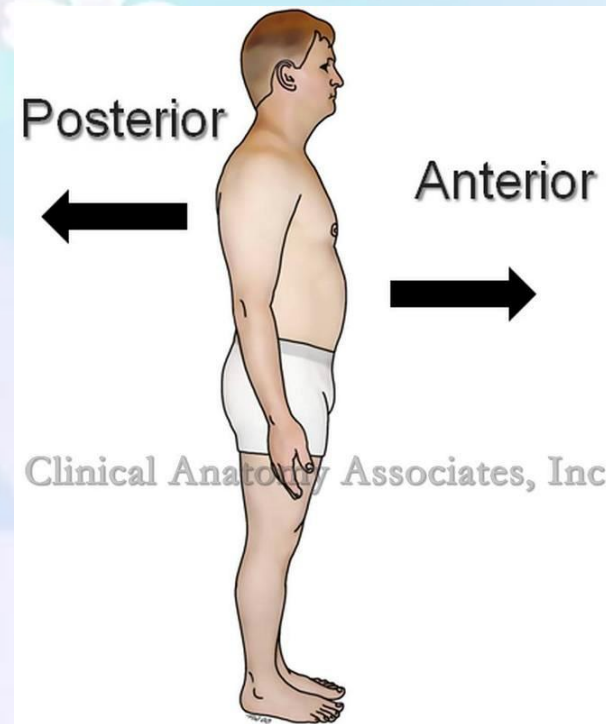
- http://higheredbcs.wiley.com/legacy/college/tortora/0470565101/hearthis_ill/pap13e_ch01_illustr_audio_mp3_am/simulations/figures/position.jpg



The position with the body erect with the arms at the sides and the palms forward.

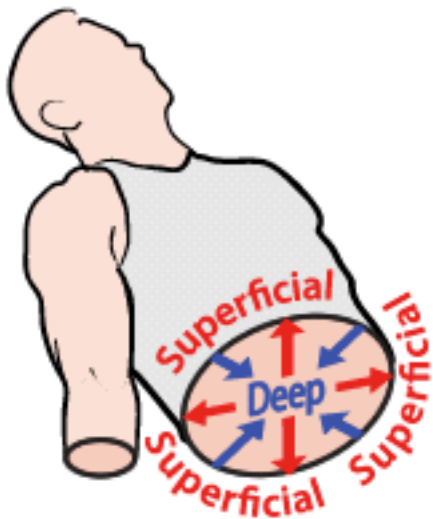
B. Directional term

- Anterior (ventral)
 - Towards or at the front of the body
 - In front of



B. Directional term

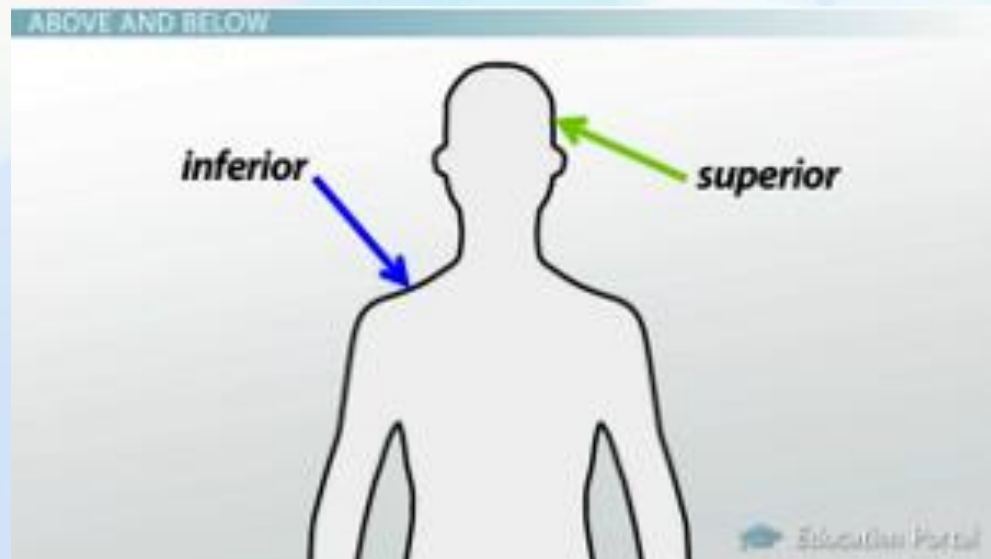
- Deep (Internal)
 - Away from the body surface
 - More internal



<http://www.bodyteen.com/img/fan/terms/SupVsDeep.gif>

B. Directional term

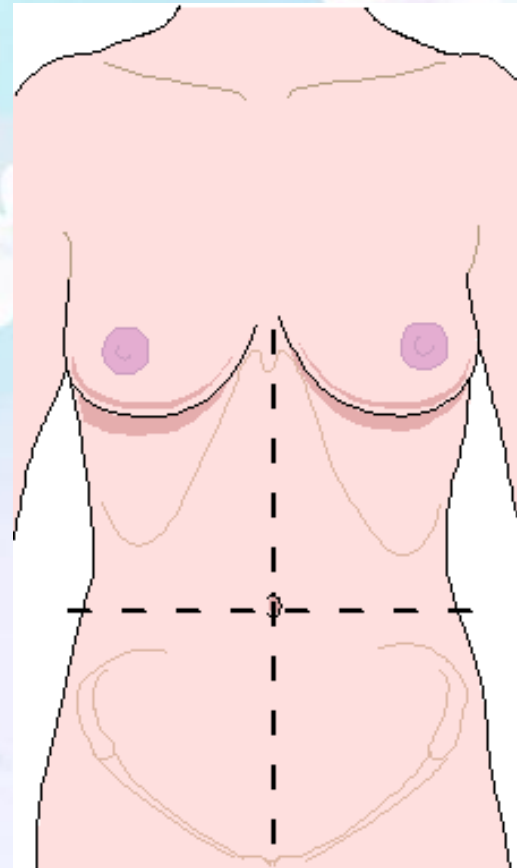
- Inferior (caudal)
 - Away from the head end
 - Toward the lower part of a structure or the body
 - Below



<http://study.com/cimages/multimages/16/superior-inferior-directions.jpg>

C. Regional Terms: Anterior Body Landmarks

- Anterior Body Landmarks
 - Abdominal: anterior body trunk inferior to the ribs

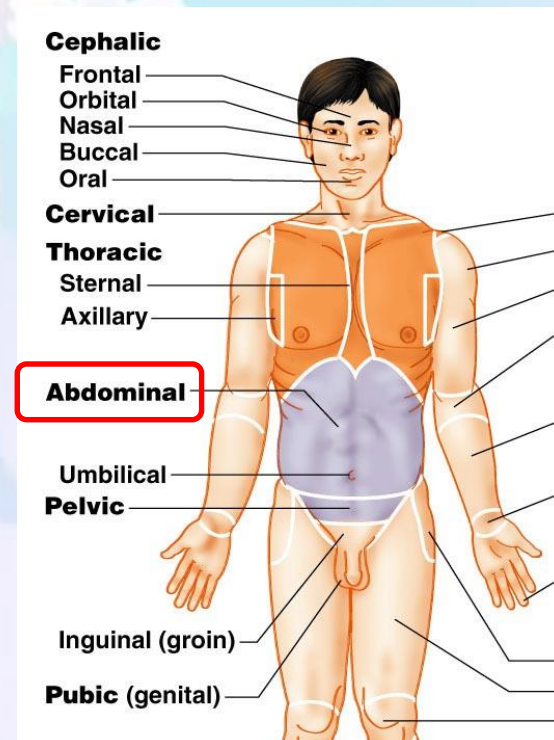


http://shs2.westport.k12.ct.us/forensics/02-evidence/regions_&_quadrants-blank.gif

C. Regional Terms:

Anterior Body Landmarks

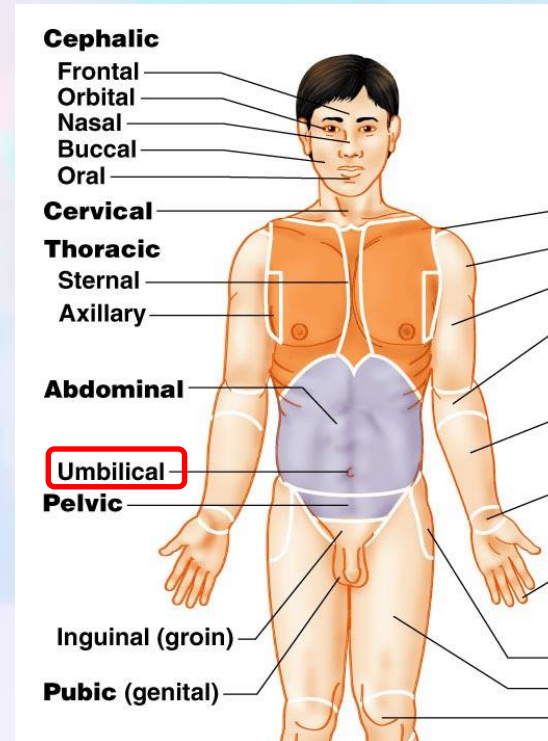
- Abdominal
 - anterior body trunk inferior to ribs



<https://www.tes.com/lessons/w5Xnm1qwRPcPSg/anatomical-term>

C. Regional Terms: Anterior Body Landmarks

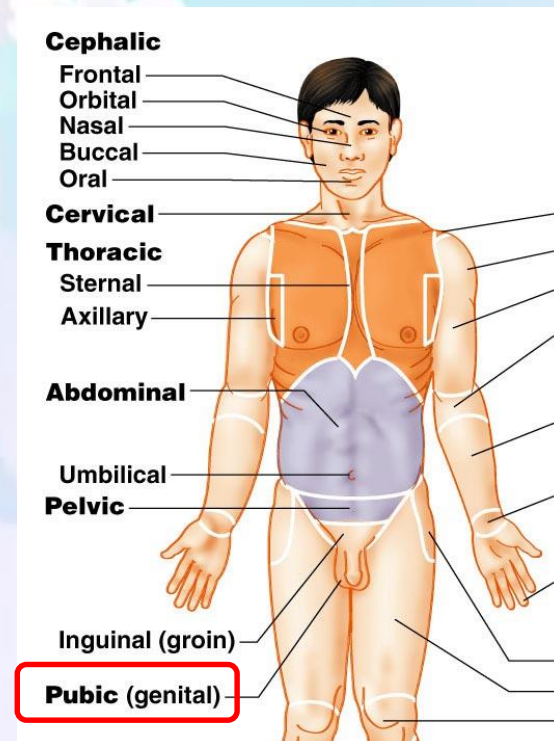
- Umbilical
 - navel



<https://www.tes.com/lessons/w5Xnm1qwRPcPSg/anatomical-term>

C. Regional Terms: Anterior Body Landmarks

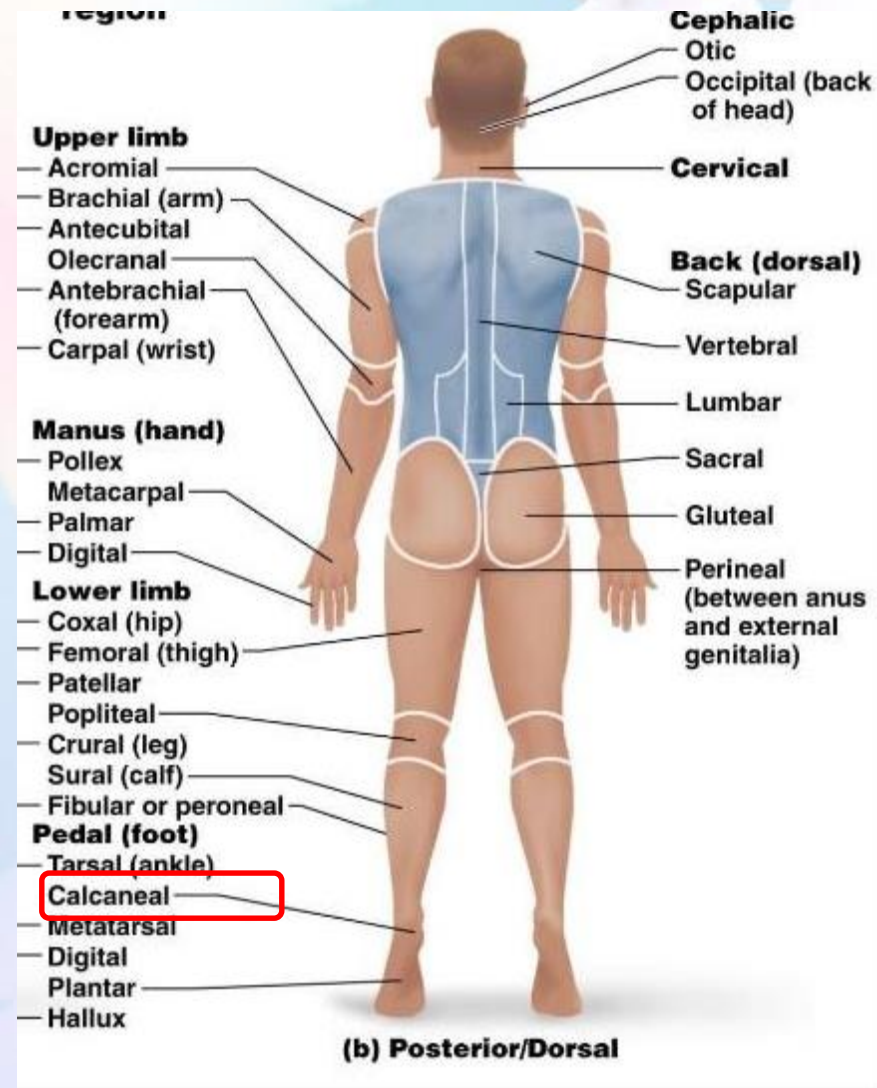
- Pubic
 - Genital region



<https://www.tes.com/lessons/w5Xnm1qwRPcPSg/anatomical-term>

C. Regional Terms: Posterior Body Landmarks

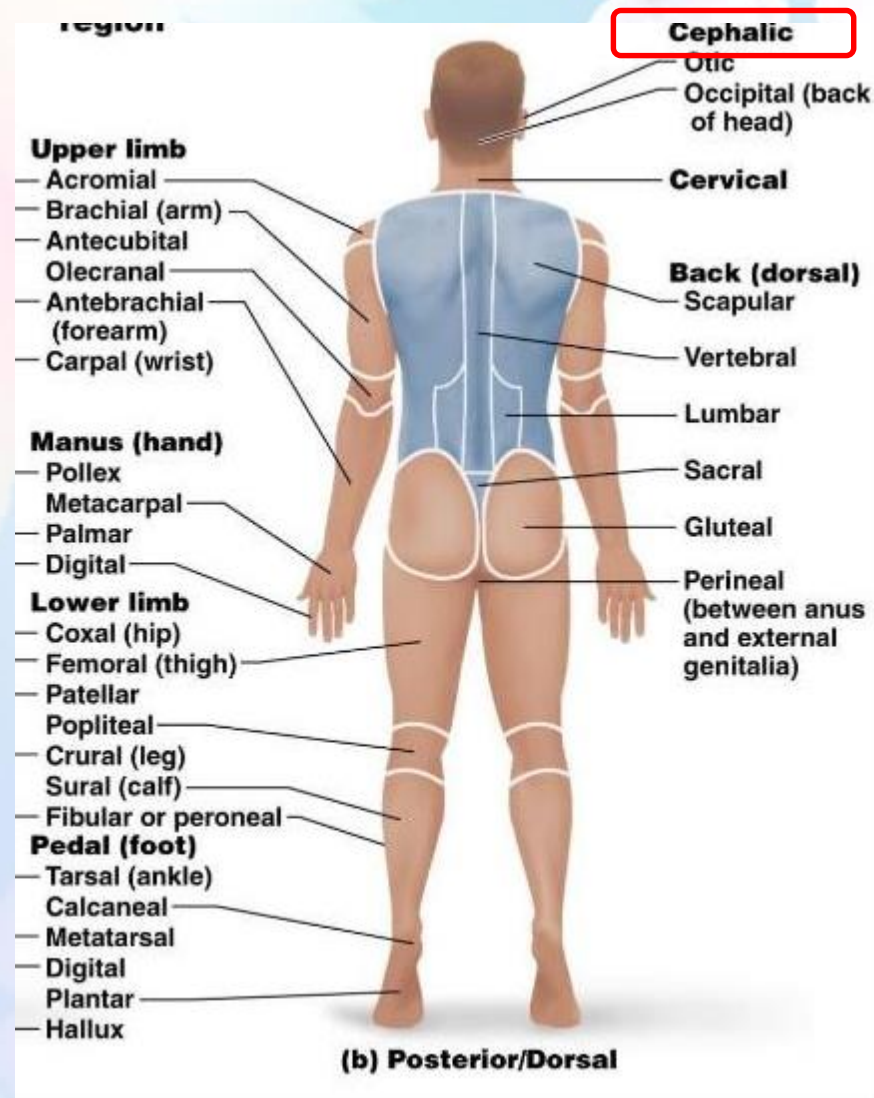
- Calcaneal
 - Heel of foot



<https://www.tes.com/lessons/w5Xnm1qwRPcPSg/anatomical-term>

C. Regional Terms: Posterior Body Landmarks

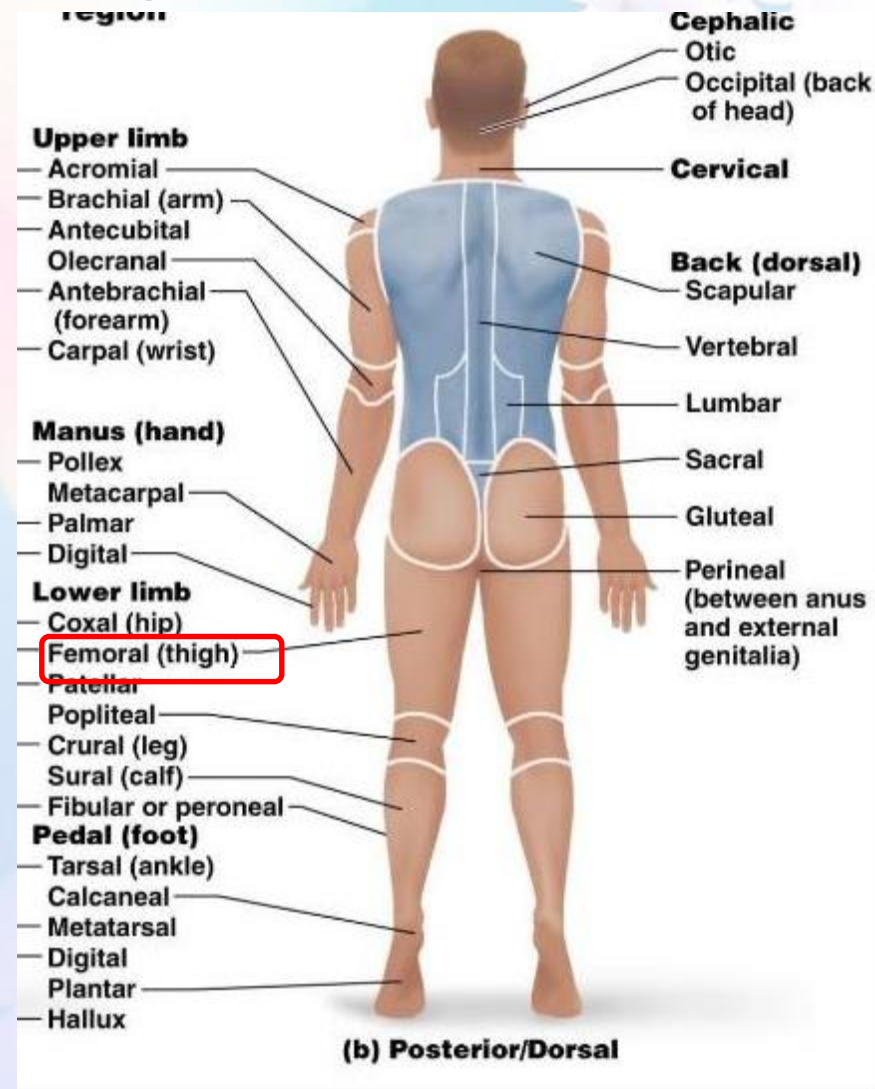
- Cephalic
- Head



<https://www.tes.com/lessons/w5Xnm1qwRPePSg/anatomical-term>

C. Regional Terms: Posterior Body Landmarks

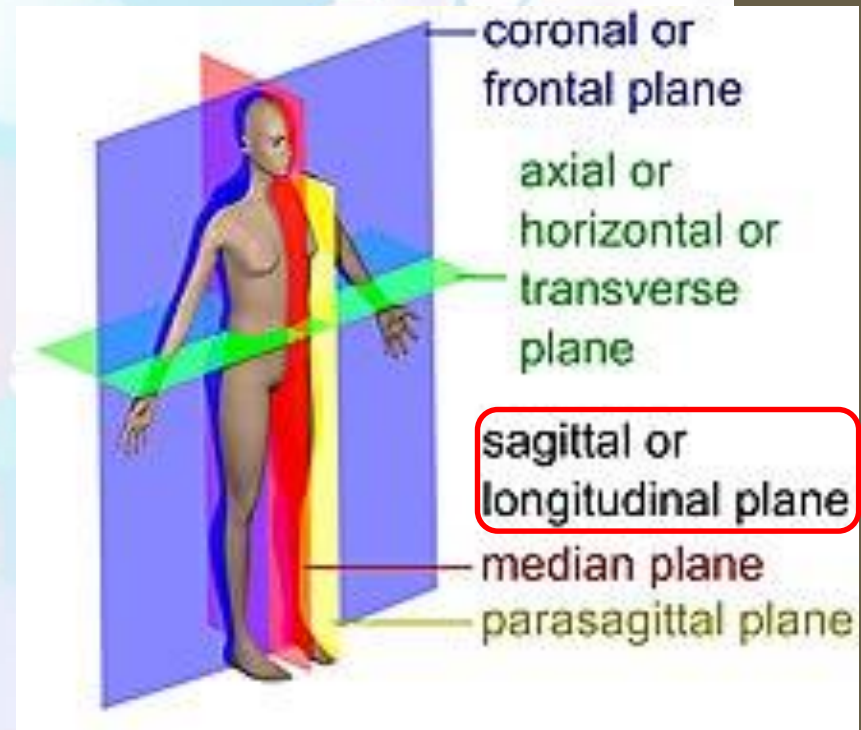
- Femoral
 - Thigh



<https://www.tes.com/lessons/w5Xnm1qwRPcPSg/anatomical-term>

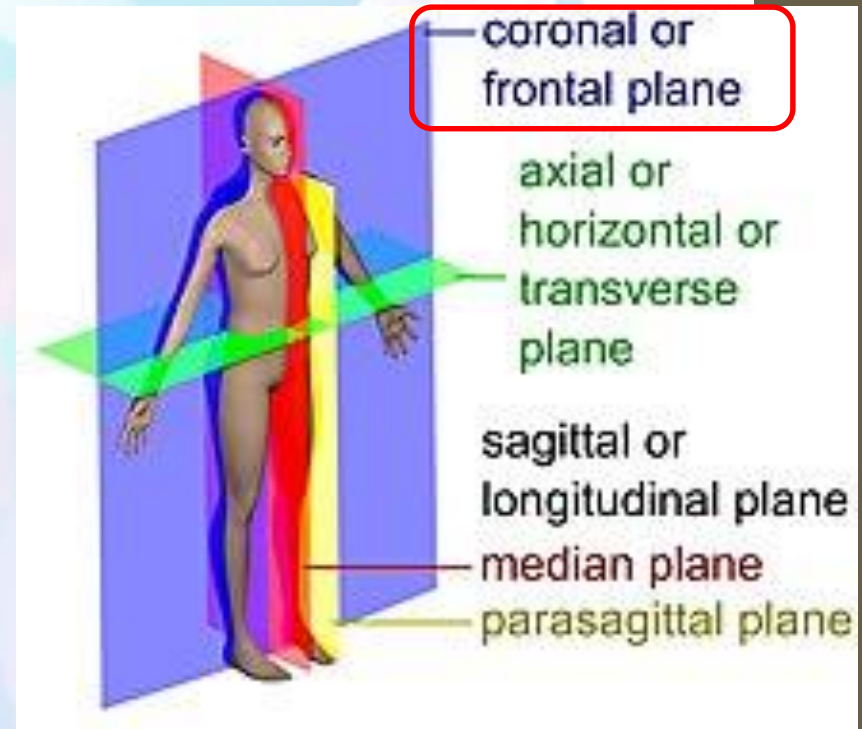
D. Body Planes & Sections:

- **Sagittal plane** or **Median plane** (*longitudinal, anteroposterior*) is a plane parallel to the sagittal suture.
- It divides the body into left and right.



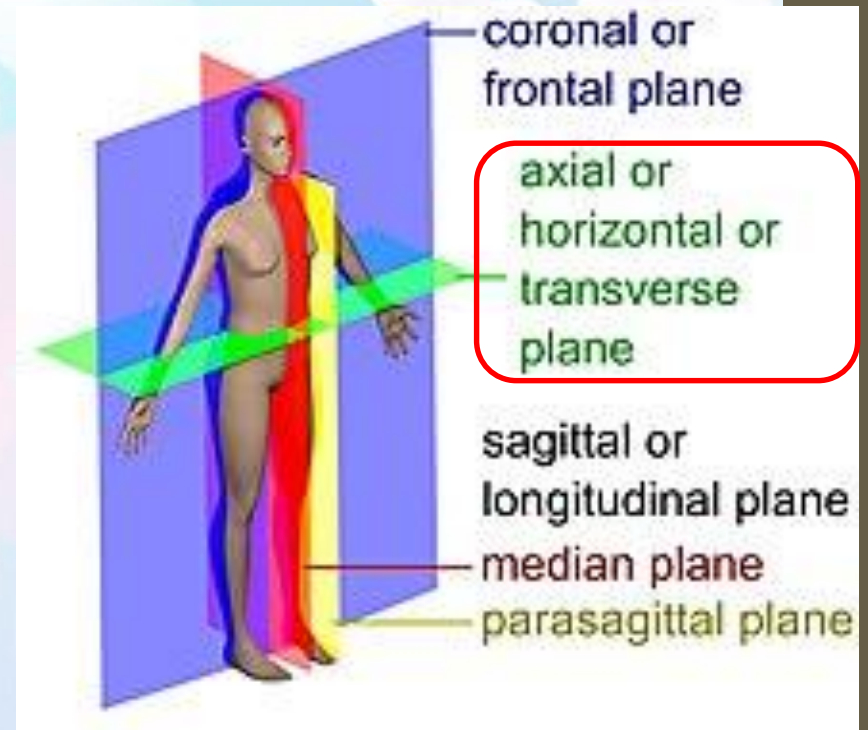
D. Body Planes & Sections:

- The **Frontal plane** or **Coronal Plane** divides the body into dorsal and ventral (back and front, or posterior and anterior) portions.



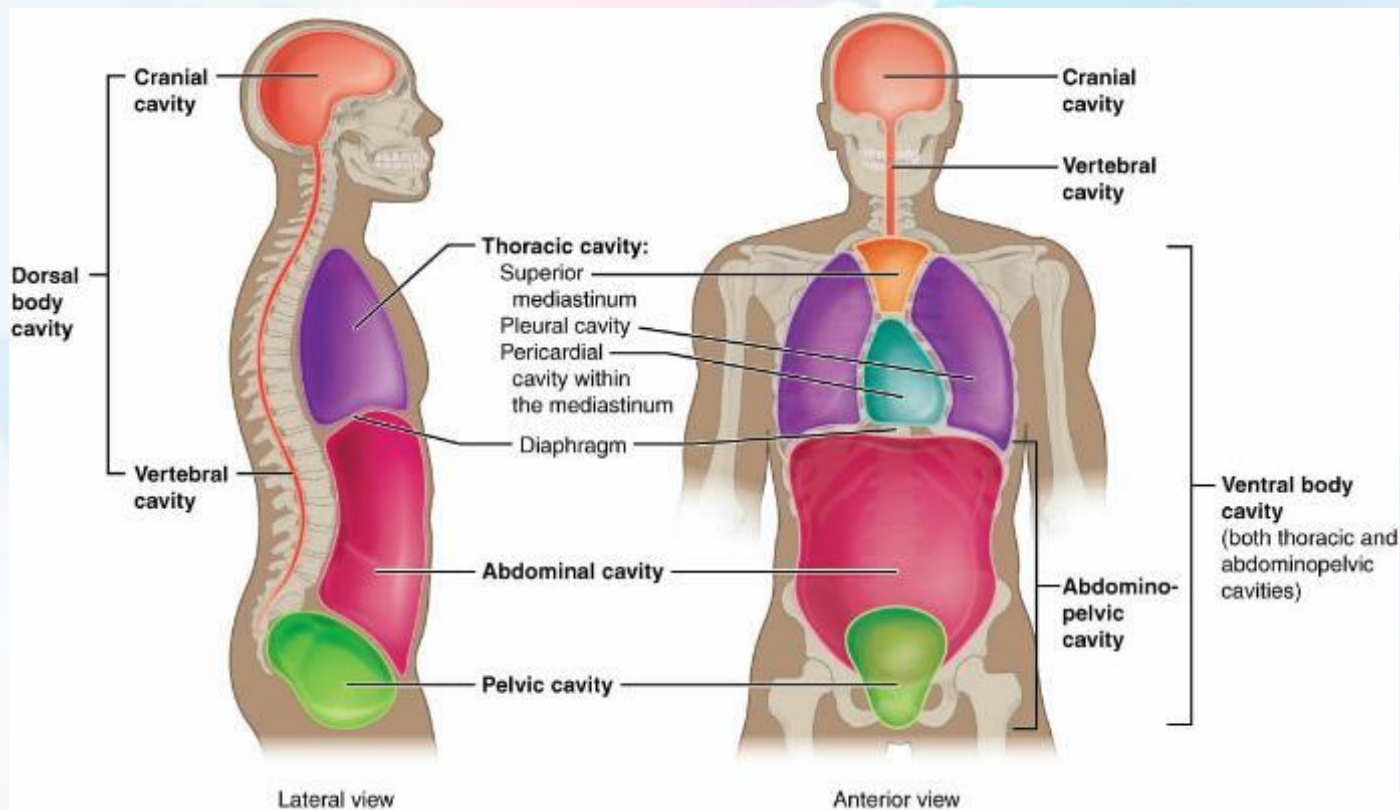
D. Body Planes & Sections:

- The **Transverse Plane** or **Axial plane** (*lateral, horizontal*) divides the body into cranial and caudal (head and tail) portions



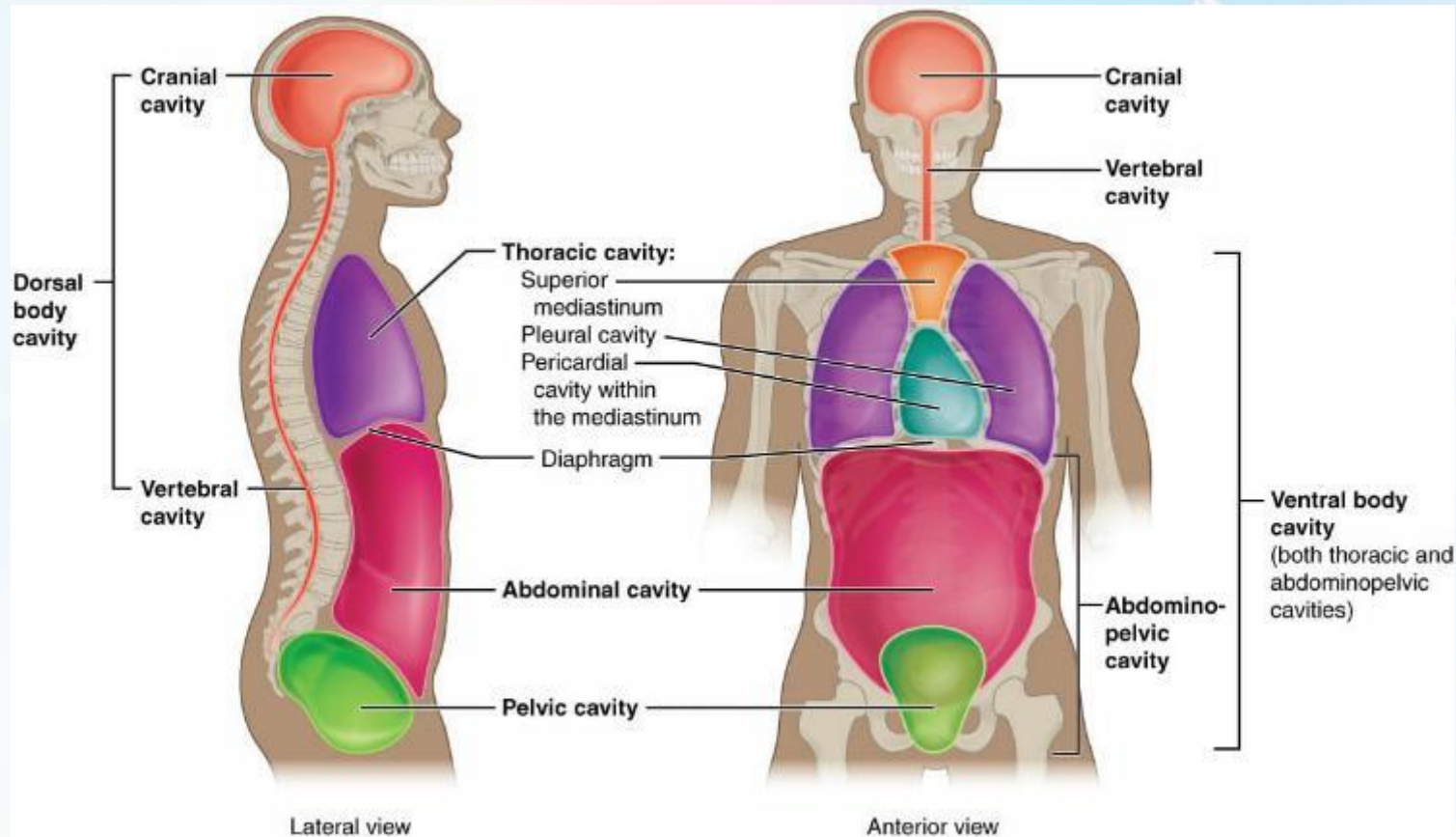
E. Body Cavities

- Dorsal body cavity – 2 subdivisions
 - **Cranial cavity** - space inside the bony skull & houses the brain
 - **Spinal cavity** – contains spinal cord



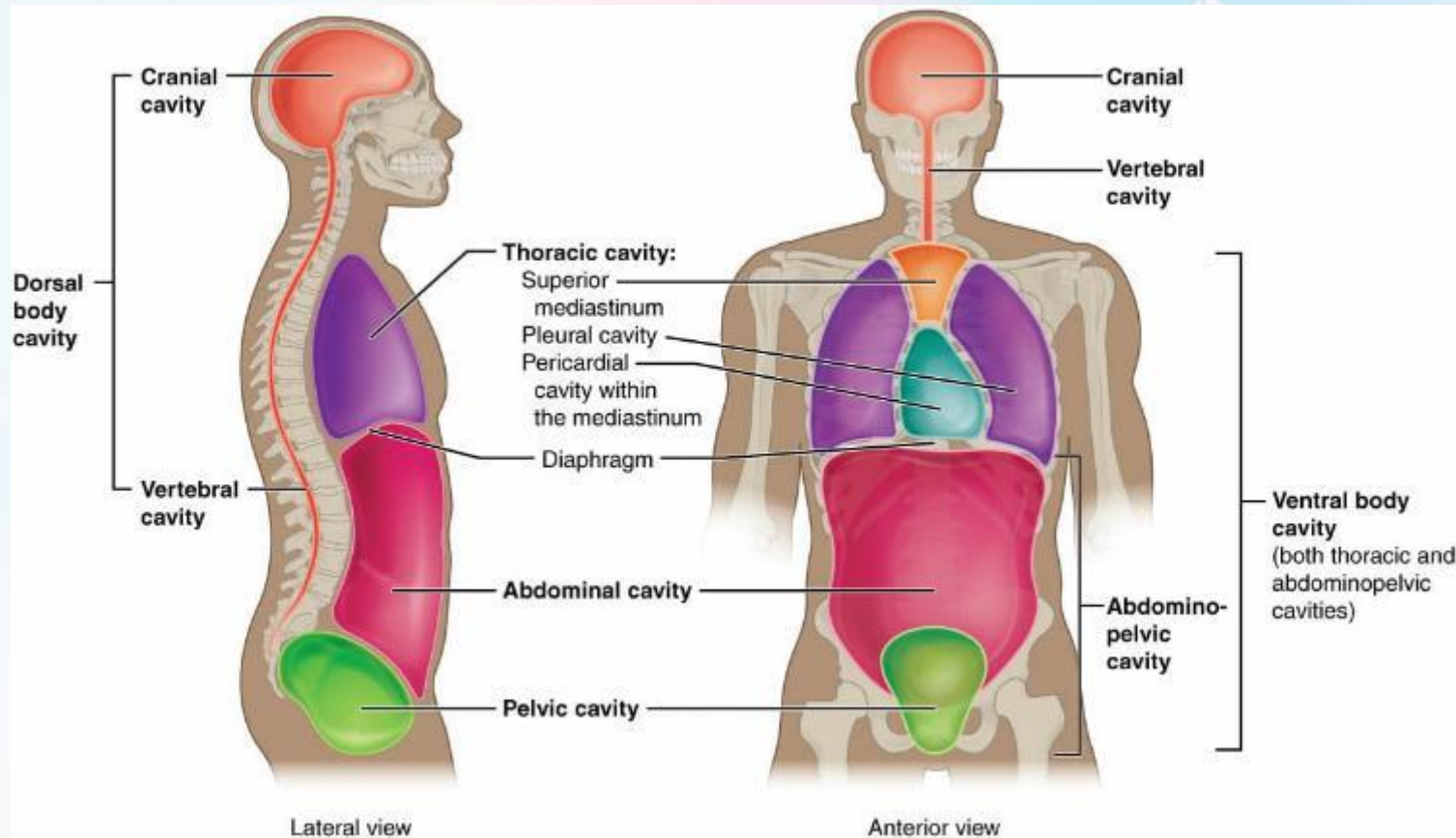
E. Body Cavities

- Ventral body cavity – 3 subdivisions
 - **Thoracic** - space that contains the heart and the lungs which are protected by the ribcage



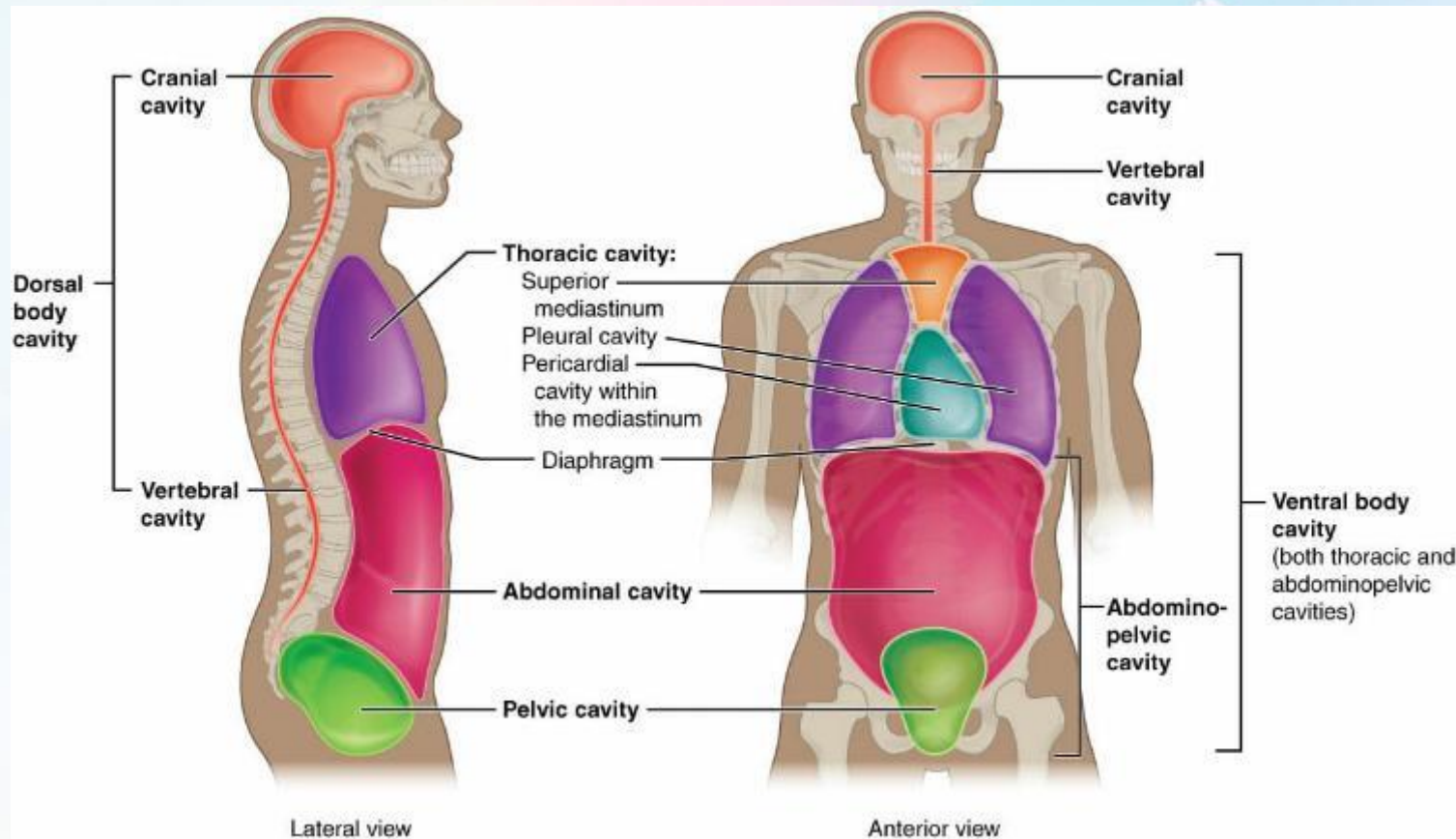
E. Body Cavities

- Ventral body cavity – 3 subdivisions
 - **Abdominal Cavity** - space that contains the stomach, liver and intestines



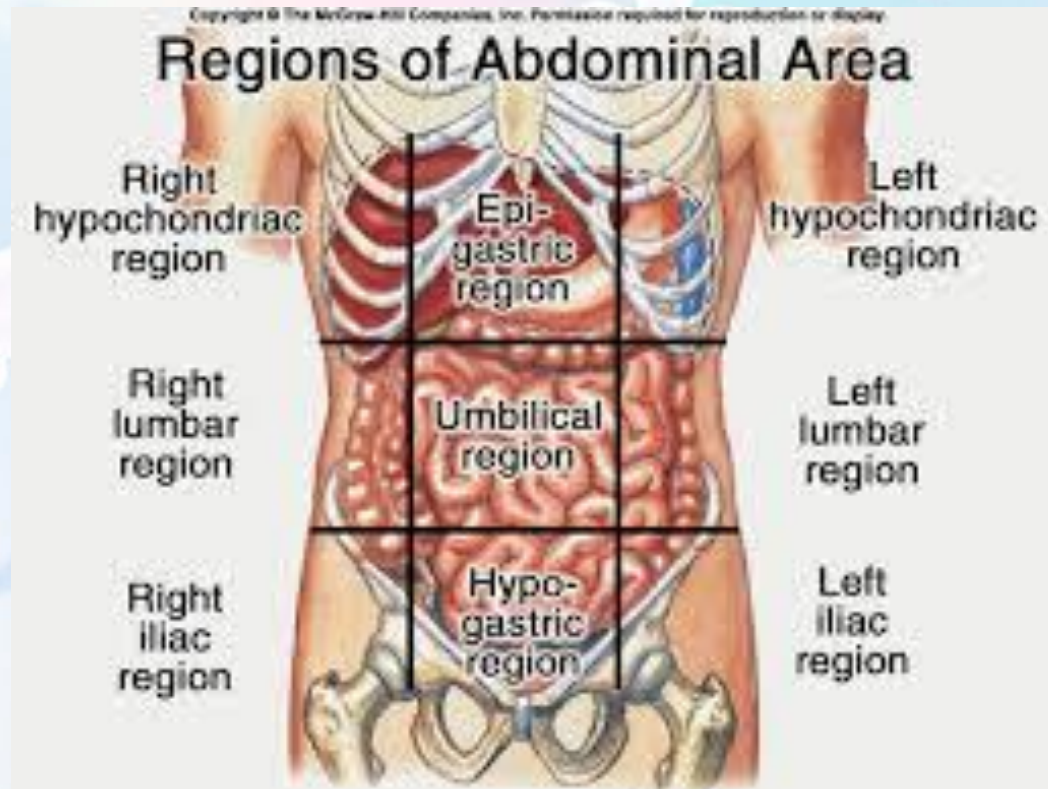
E. Body Cavities

- Ventral body cavity – 3 subdivisions
 - **Pelvic Cavity** - space that contains the reproductive organs, bladder and rectum



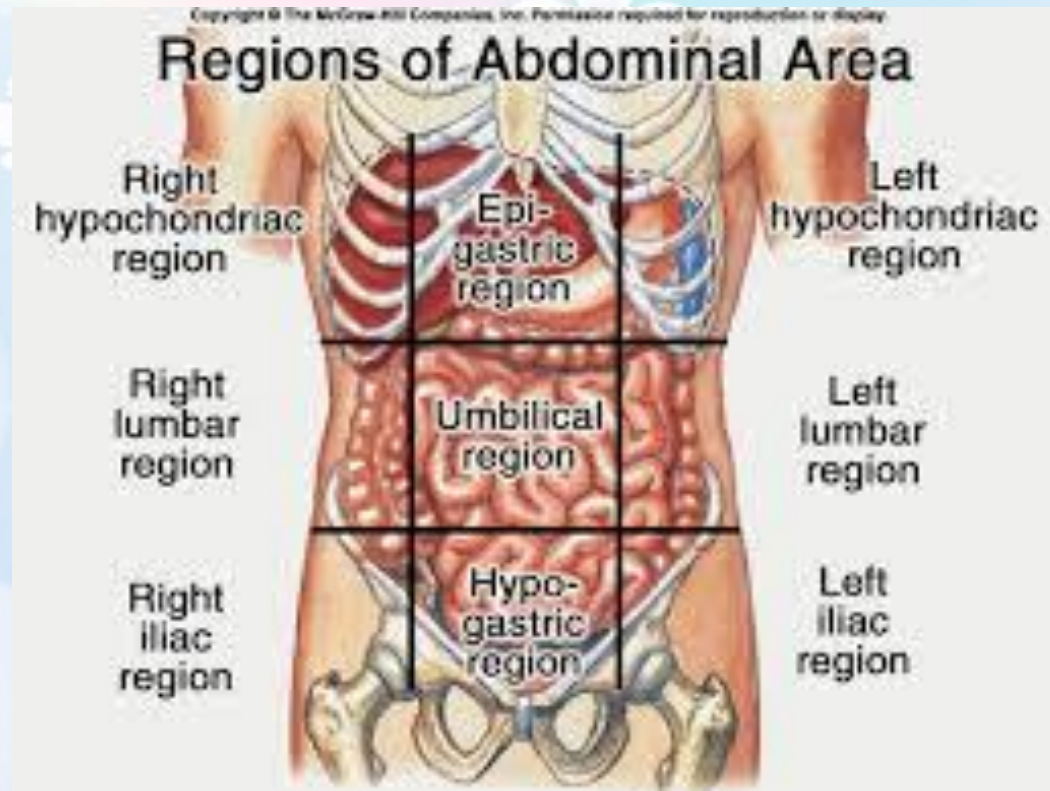
E. Body Cavities

- Ventral body cavity – abdominopelvic regions
 - The **umbilical region** is the centermost region, deep to and surrounding the umbilicus (navel).



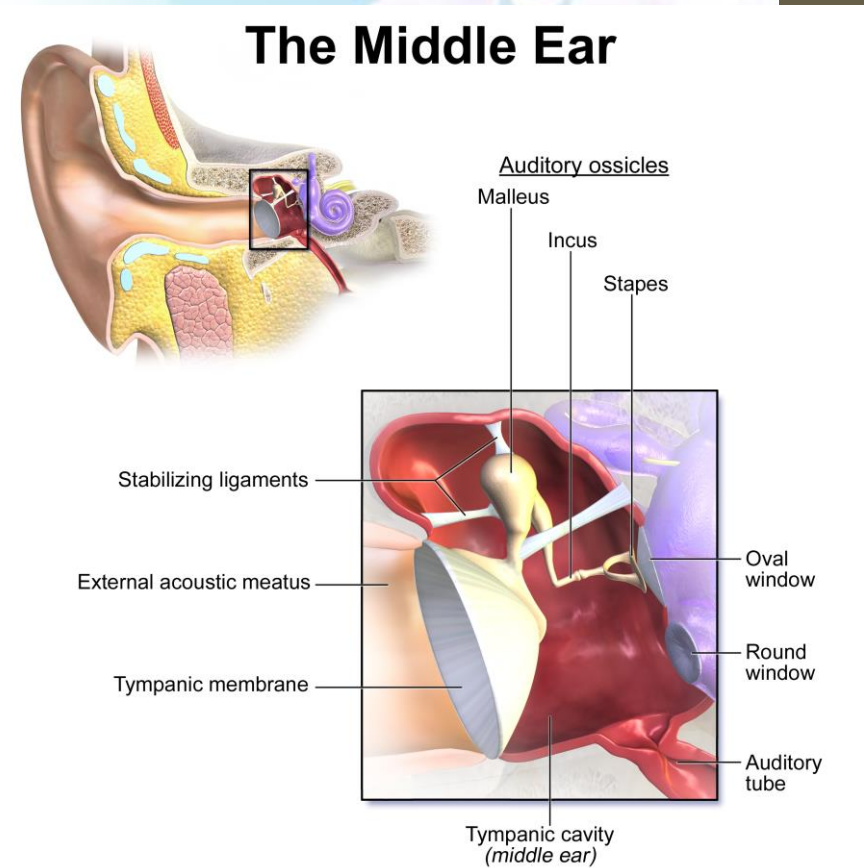
E. Body Cavities

- Ventral body cavity – abdominopelvic regions
 - The **epigastric region** is located superior to the umbilical region (*epi* = upon, above; *gastric* = stomach).



E. Other Body Cavities

- Middle Ear Cavities
 - The middle ear cavities carved into the skull lie just medial to the eardrums.
 - These cavities contain tiny bones that transmit sound vibrations to the hearing receptors in the inner ears.



E. Other Body Cavities

- **Orbital Cavities**
 - The orbital cavities (orbits) in the skull house the eyes and present them in an anterior position.

