

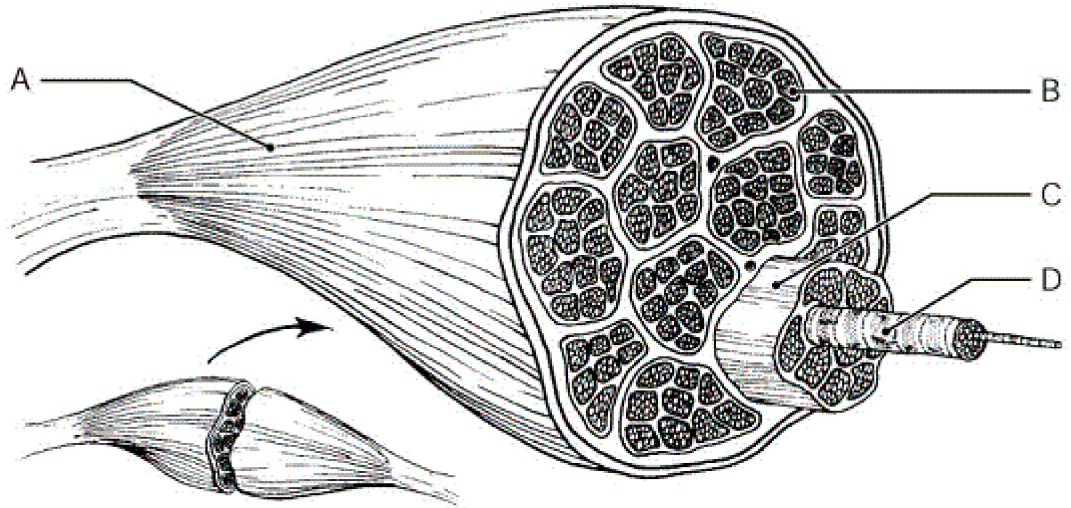
**Warm-Up: Muscle Tissue Overview A (p. 181-185)****Short Answer**

Figure 6.2

Using Figure 6.2, match the following:

1. The epimysium is represented by letter \_\_\_\_\_.
2. The perimysium wraps a fascicle of muscle cells and is represented by letter \_\_\_\_\_.
3. The muscle fiber is indicated by letter \_\_\_\_\_.
4. The endomysium that wraps individual muscle fibers is indicated by letter \_\_\_\_\_.
5. Striated, voluntary, multinucleate muscle is classified as \_\_\_\_\_ muscle.
6. The epimysium covering on the outside of the muscle can blend into cordlike \_\_\_\_\_ or sheetlike \_\_\_\_\_.
7. The plasma membrane of skeletal muscle cells is called \_\_\_\_\_.

**Multiple Choice:** Identify the choice that best completes the statement or answers the question.

- \_\_\_\_\_ 8. Voluntary muscle tissue is;  
 (A) dense regular (D) smooth muscle  
 (B) cardiac muscle (E) dense irregular  
 (C) skeletal muscle
- \_\_\_\_\_ 9. Endomysium covers:  
 (A) fascicles of muscle cells (D) smooth muscle only  
 (B) an individual muscle cell (E) an entire muscle  
 (C) myofibrils
- \_\_\_\_\_ 10. The type of muscle tissue pictured in Figure 6.3 is:

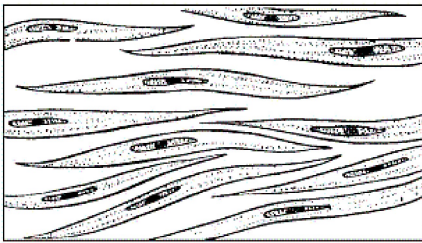


Figure 6.3

- (A) found only in the heart (D) striated  
 (B) voluntary (E) smooth muscle  
 (C) skeletal muscle
- \_\_\_\_\_ 11. The plasma membrane of a skeletal muscle cell is called the:  
 (A) sarcolemma (D) sarcoplasmic reticulum  
 (B) myofilament (E) sarcomere  
 (C) sarcoplasm
- \_\_\_\_\_ 12. Smooth muscle cells are:  
 (A) involuntary (D) striated  
 (B) branched (E) cylindrical  
 (C) multinucleate
- \_\_\_\_\_ 13. Which type of muscle tissue responds the fastest to stimulations to contract:  
 (A) smooth (D) visceral  
 (B) tendons (E) skeletal  
 (C) cardiac
- \_\_\_\_\_ 14. Which of the following is NOT a function of the muscular system:  
 (A) generation of heat (D) stabilization of joints  
 (B) maintenance of posture (E) production of movement  
 (C) hematopoiesis